

Steps To Ministry

- 1 Preliminary Questionnaire
- 2 Formal Application
- 3 Personal Interviews
- 4 Evaluation by Personnel Committee
- 5 Approved Candidate Status
- 6 Candidate Orientation
- 7 Deputation Ministry
- 8 Full-time Ministry

Doctrinal Statement

We stand for and emphasize the foundational truths held in common by evangelical Christians—our basis of fellowship being a oneness of heart and mind in all things of the Lord and adherence to the historic Christian faith expressed as follows:

- 1 The Bible, which is verbally inspired by the Holy Spirit and inerrant in the original manuscripts and is the infallible and authoritative Word of God
- 2 The Triune Godhead in Three Persons—Father, Son, and Holy Spirit
- 3 The personality of Satan, called the Devil, and his present control over unregenerate mankind
- 4 The fall and lost estate of man, whose total depravity makes necessary the new birth.
- 5 The deity of Jesus Christ, His virgin birth, sinless life, death, bodily resurrection, present exaltation at God's right hand, and personal imminent return
- 6 The atonement by the substitutionary death and shed blood of Jesus Christ our Lord and Saviour
- 7 The resurrection of the saved unto everlasting life and blessedness in heaven, and the resurrection of the unsaved into everlasting punishment in hell
- 8 The Church, the Body or Bride of Christ, consisting only of those who are born again, for whom He now makes intercession in heaven and for whom He shall come again.
- 9 Christ's commission to the Church to go into all the world and preach the gospel to every creature

The American Missionary Fellowship is associated with the Interdenominational Foreign Missions Association, The Association of North American Missions, and the Evangelical Council for Financial Accountability

American Missionary Fellowship
672 Conestoga Road P.O. Box 368
Villanova, PA 19085
Phone: (215) 527-4439



Previously American Sunday School Union

American Missionary Fellowship

M i n i s t r i e s

Programs

A variety of program options provide a framework which enables AMF missionaries to use God-given skills and abilities to their fullest potential. By tailoring each program around specific target areas, a missionary can concentrate on the goal of reaching people for Christ.

Area Missionary

AMF Area Missionaries are responsible for developing and maintaining multiple ministries within a specified area which may be as large as a quarter of a state, or as small as a twelve-block area of a city. They determine spiritual needs, initiate ministries, and train others to share in the responsibilities. Area Missionaries touch the lives of people in hundreds of rural communities and in some of our largest cities across the country.

Church Missionary

Many AMF mission churches need pastors but cannot fully support them. We assist these growing churches by providing Church Missionaries to develop them to maturity, at which time they call their first pastor. The Church Missionary then begins ministry in another church.

Camp Missionary

Some of our larger AMF camps require full-time Camp Missionaries to direct programs, recruit staff, and plan the details necessary for a successful Christian camping outreach.

Associate Missionary

While employed part time in a secure job, Associate Missionaries spend a minimum of three days a week in ministry with AMF, often in areas where full-time ministry is not urgent.

Summer Missionary

Designed primarily for college, Bible school, and older high school students, our Summer Missionary program provides an opportunity for young people to assist AMF missionaries during the busy summer months.

Short-Term Missionary

Opportunities for short-term ministry with AMF are available to individuals of college through retirement age. Short-term missionaries serve from one to two years under the guidance of a full-time missionary. Also, seconding arrangements made with other mission agencies permit some missionaries, who are home on an extended turlough, to serve on a short-term basis with AMF.

Methods

Our desire to reach people in areas with regional distinctives means our missionaries use diverse methods to maximize the effectiveness of the gospel. Although we use numerous methods in evangelizing, congregating, and discipling, the following represent the major ones.

Church Planting & Development

In communities with no gospel-preaching church, or wherever spiritual needs exist, AMF missionaries endeavor to establish churches which honor the Word of God. Other churches are helped to grow and develop as missionaries teach, train, and counsel the church leaders.

Sunday Schools

The Sunday school has been a mainstay of ministry since our beginning. Children, teens, and adults hear of salvation through Christ and grow in their understanding of God through this means of weekly Bible teaching. A growing Sunday school may have potential to become an established church.

Vacation Bible School

VBS is an effective means for evangelizing children and teaching them God's Word during a concentrated period of time. Whether held on a lawn, in a school, or at a church, these summer ministries open doors of opportunity in communities otherwise unreached with the Gospel of Christ.

Christian Camping

Our camping programs include several forms, such as trail camps, wilderness experiences, Bible camps, and family camps. By combining physical recreation with spiritual challenge, camping proves to be an exciting means of evangelism and discipleship for children, teens, and adults.

Bible Studies

Conducted with small groups of people often in the informal atmosphere of a home, Bible studies are an effective means for evangelism and discipleship. Bible study groups have the potential to develop into organized churches.

Children and Teen Ministries

Many activities are geared toward young people. Bible clubs and classes for children are held throughout the school year, and year-round youth groups for teenagers are organized to provide fellowship and opportunities for growth in Christ.



The United States is a dynamic mixture of all kinds of people from all kinds of places. The American Missionary Fellowship is a mission agency deeply committed to ministry that reaches out and serves the spiritual needs of our nation's diverse population.

Opportunities

Numerous opportunities for ministry surround us. Our 150 missionary families in 35 states will attest to that. Yet, we need additional qualified men and women. Perhaps you should consider serving with American Missionary Fellowship!

In Rural Communities

AMF missionaries minister in hundreds of rural communities from Maine to California. Hispanics living in rural areas of the northwest and south hear the good news of Christ through our bilingual missionaries.

In Large Cities

AMF missionaries meet spiritual needs in large cities like multi-ethnic Los Angeles, Philadelphia, and Washington, D.C. Great opportunities exist for reaching these people with the gospel.

All Kinds Of People

AMF missionaries reach all kinds of people. Black, White, Hispanic, Korean, Indian, and the list goes on. AMF missionaries reach all age groups, retired folks, children, teenagers, adults, and families.

Basic Qualifications

Men and women serving with American Missionary Fellowship must acknowledge Jesus Christ as their Savior and Lord and possess a concern for unreached people. Training in God's Word, commitment to sound doctrine, and the ability to teach Bible truth are other requirements. Candidates must possess leadership skills and good health. Are you interested? If so, please write to our Director of Ministries and request a Preliminary Questionnaire.



A mission with **Distinctives** and **Diversity**

Missionary Perspective

Our ministry is to reach out to people in the United States who are largely bypassed by other ministries and to evangelize, congregate, and disciple them. Discerning the spiritual needs of people within specific geographical areas, our missionaries adopt appropriate methods for meeting those needs.

We strive to see men and women, boys and girls come to know Jesus Christ and grow in Him. We seek to help groups of believers attain their greatest potential, whether that takes the form of a Sunday school or a church.

Ministry Extension

AMF missionaries do not work alone; others work closely with them. Our missionaries' effectiveness is greatly multiplied as thousands of volunteers combine their spiritual gifts and experience to assist in the task of proclaiming Jesus Christ.

Godly Heritage

American Missionary Fellowship does not possess merely a long history, but also a solid record of Christ-centered ministry. Founded in 1817, the American Sunday School Union pioneered the establishment of Sunday schools which ceaselessly taught the Bible to children and adults. In fact, we started over 120,000 new Sunday schools in our first 100 years alone.

Under our present name, American Missionary Fellowship, our outreaches extend beyond the Sunday school. Yet we maintain our commitment to Christ-centered ministry, which has been our mark for over 170 years.



MUTUAL MISSION

"One Lord, one Faith, one Baptism"

The Presbyterian Church (U.S.A.) is celebrating its bi-centennial. For 150 years of that time, it has been a missionary church, sharing the good news of God's love to all people.

With the emergence of strong churches in all parts of the world, the Presbyterian Church (U.S.A.) has begun to recognize that we too have much to learn from Christians in other parts of the world. We recognize that mutuality in mission is a basic concept in the world-wide church. In 1974, the 186th General Assembly made the statement that, "Mutuality in Mission means sharing of responsibility in mission by: a) sending of personnel and resources to the Third World, b) joint action in all areas possible, c) development of leadership, and d) giving and receiving each others gifts of personnel."

Though the 1974 mandate of the General Assembly has basically been followed – for we have been a giving and sending church, we have been slow to listen to and receive gifts from churches in the Third World. It is often difficult to understand or accept the idea that there is a "mission field" in the United States and that we need our partners from churches in the Third World to help. They can bring fresh approaches and prophetic criticism to our understanding of the Gospel.



MUTUALITY IN MISSION

Through the Mutual Mission Office, the Global Mission Unit seeks to bring into focus the gifts which the overseas partner churches have to offer, that our lives may be enriched and changed.

Programs which can help individuals, local congregations, presbyteries, and synods grow in the understanding of the global mission of the PC(U.S.A.) as well as enable us to receive the gifts of our overseas church partners are:

- Mission to the U.S.A.
- Ecumenical Exchanges and
- Presbytery/Synod Partnerships.

The office also resources a network of Global Mission Advocates who keep the issues of Global Mission before the church throughout the year.

The office also seeks to resource, as needed, synods, presbyteries, seminaries, institutions of higher education, conferences and conference centers, to encourage internationalization of mission in every aspect of church activity.



MISSION TO THE U.S.A.

The Mission to the U.S.A. office provides an avenue for receiving ministry from partner churches. The program enables congregations, presbyteries, synods, seminaries, church camps and others to utilize the experience and understanding which overseas Christian colleagues bring, in order to enrich and enhance the mission and ministry of the Presbyterian Church (U.S.A.).

The Mission to the U.S.A. program stands ready to:

- assist in the designing of Mission to the U.S.A. projects, and in formulating requests for personnel needed for them;

- recruit personnel to come to the U.S. as missionaries, provide documentation required for U.S. visa purposes, arrange for insurance, and offer hospitality where possible to persons in transit;
- suggest pre-project study material, help with orientation and evaluation, and facilitate follow-up;
- participate financially by offering up to one-half of the cost of travel of these missionaries from place of residence to place of assignment in the U.S.



PRESBYTERY/SYNOD PARTNERSHIPS

Mutual Mission takes place through Presbytery/Synod Partnerships when we come to realize that we have much to learn from our brothers and sisters in Christ from overseas partner churches. The Presbytery/Synod Partnership Office facilitates these special relationships.

Presbytery/Synod international partnerships with overseas churches provide a way to strengthen the total mission of the church through:

- concrete involvement in ministries of proclamation, compassion, justice, reconciliation, education for mission and partnership;

- strong and meaningful relationships with churches overseas;
- deepened discipleship through direct involvement in mission;
- a sense of the oneness of the Christian community around the world;
- an expression of empathy and solidarity with the poor and oppressed;
- a broadened base for support for Christian mission.

These Presbytery/Synod Partnerships are designed to respond to different kinds of needs in the presbyteries of the PC(U.S.A.) as well as in the overseas partner churches.



ECUMENICAL EXCHANGES

The Ecumenical Exchange Office provides individuals and groups opportunities to learn and grow through travel/study experiences of various types. Participants have genuine faith exchanges with Christians in other countries and with Christians who live out their faith in different political, social, cultural and economic settings.

The office of Ecumenical Exchange relates to the following programs:

1. International Involvement experiences through:

- travel/study seminars – special seminars for PC(U.S.A.) or linked with NCC seminars.
- Gift of New Eyes – a travel/study program for presbyteries seeking learning and advocacy experiences relating to human rights, peace and justice.

- I.D.E.A. (International Designs for Economic Awareness) – a travel/study program within the Synods of Lakes and Prairies, Covenant, and Piedmont, which emphasizes economics justice.

2. Youth Workcamps

- International – PC(U.S.A.) youth live, worship and work along with youth in other countries, working on projects chosen by our overseas partners.
- USA – PC(U.S.A.) churches invite youth from partner churches to assist in special projects in the U.S.

3. Youth in Mission

Individuals (age 18-25) are invited by partner churches to spend a summer working on special projects.



For further information concerning
any of these programs, please write or
call the offices listed below:

MUTUALITY IN MISSION
100 Witherspoon Street
Louisville, KY 40202
(502) 580-1900

MISSION TO THE U.S.A.
PERSONNEL OFFICE
100 Witherspoon Street
Louisville, KY 40202
(502) 580-1900

PRESBYTERY/SYNOD
PARTNERSHIP OFFICE
100 Witherspoon Street
Louisville, KY 40202
(502) 580-1900

ECUMENICAL EXCHANGE OFFICE
100 Witherspoon Street
Louisville, KY 40202
(502) 580-1900



MUTUAL MISSION
GLOBAL MISSION UNIT PRESBYTERIAN CHURCH (U.S.A.)

"I anticipated seeing God work in the lives of the kids. But I was even more surprised (and excited) to recognize His hand in my life during the summer."

**Tammy Jansen,
Nebraska**

"Summer missions provided me the opportunity to experience a variety of Christian ministries."

**Leonard Thompson,
Philadelphia**

"Summer missions is a great way to spend the summer."

**Joe Beard,
Central Idaho**



Facts about the American Missionary Fellowship

The American Missionary Fellowship is the nation's oldest independent home missions organization. Its ministry is to reach out to people in the United States who are largely bypassed by other ministries and to evangelize, congregate, and disciple them. Today, over 150 missionary families serve in widely diverse rural and urban areas of the nation. The American Missionary Fellowship is affiliated with the Interdenominational Foreign Missions Association, The Association of North American Missions, and the Evangelical Council for Financial Accountability.



Doctrinal Statement

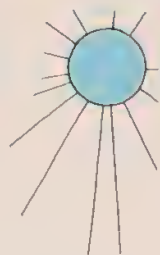
AMF stands upon and emphasizes the foundational truths held in common by evangelical Christians. Its basis of fellowship is a oneness of heart and mind in all things of the Lord and adherence to the historic Christian faith expressed as follows:

- 1 The Bible, which is verbally inspired by the Holy Spirit and inerrant in the original manuscripts and is the intallible and authoritative Word of God.
- 2 The Triune Godhead in Three Persons—Father, Son, and Holy Spirit
- 3 The personality of Satan, called the Devil, and his present control over unregenerate mankind
- 4 The fall and lost estate of man, whose total depravity makes necessary the new birth.
- 5 The deity of Jesus Christ, His virgin birth, sinless life, death, bodily resurrection, present exaltation of God's right hand, and personal imminent return
- 6 The atonement by the substitutionary death and shed blood of Jesus Christ our Lord and Saviour
- 7 The resurrection of the saved unto everlasting life and blessedness in heaven, and the resurrection of the unsaved into everlasting punishment in hell
8. The Church, the Body or Bride of Christ, consisting only of those who are born again, for whom He now makes intercession in heaven and for whom He shall come again
- 9 Christ's commission to the Church to go into all the world and preach the gospel to every creature

American Missionary Fellowship

S U M M E R
M I S S I O N A R Y





Every summer young people, very much like you, join AMF missionaries in summer missionary service.

Why do they come? Because they want to serve Jesus Christ and they love people. So do we!

Perhaps you personally share this enthusiasm for serving the Lord Jesus Christ and this love of people. If so, join us in challenging missionary service this summer. Experience front line gospel ministry at its best; get involved where the action produces eternal results for temporary service.



Who can Apply?

Summer missionary opportunities are available to those of college or high school age whose life demonstrates strong Christian character.

What is the Length of Service?

Summer missionaries normally serve the entire summer. Occasionally shorter terms are arranged to meet special circumstances.

What Ministries are Available?

Summer missionaries serve in a variety of ways. Here are a few:

VBS Directors, Bible teachers, activity co-ordinators, missionary story tellers
Gospel teams, evangelistic teams, door to door evangelism, preaching
Camp counselors, support staff, activity leaders
... and there are many other creative opportunities for ministry.

What About Finances?

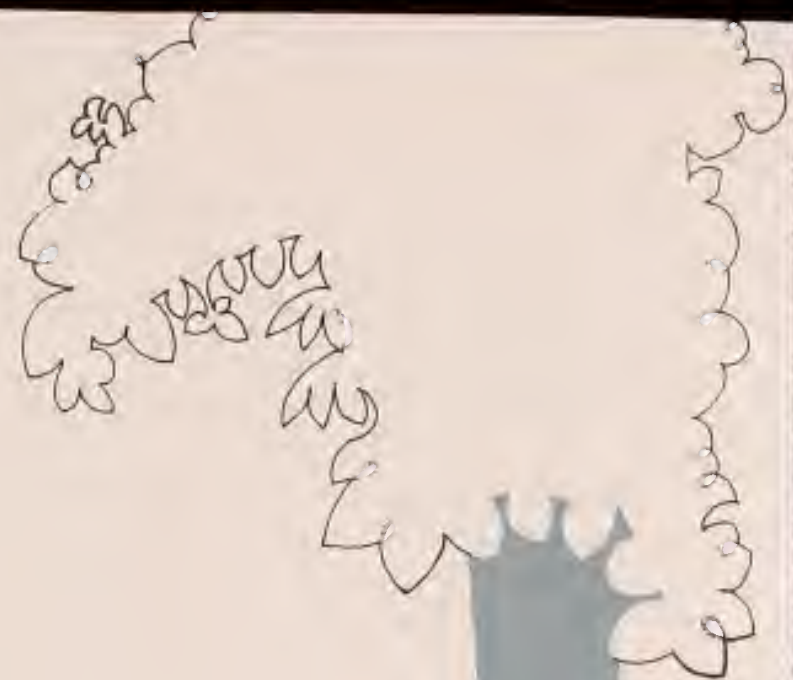
Your living and travel expenses come from personal friends and your home church. AMF provides direction and encouragement in this area.

Why Summer Missionary Service?

Summer missionary service is valuable to you because of the missionary training and the personal growth you will experience. It is valuable to AMF missionaries because you provide capable assistance during the busy summer schedule. It is most valuable to those you serve.

Where Will I Serve?

The ministry of the American Missionary Fellowship is focused on people in the United States who are largely bypassed by other ministries. Because we serve in numerous cultural environments, we are able to offer a broad latitude of ministry opportunities in virtually every geographical area of the continental United States.





Global Mission Unit

The Presbyterian Church (U.S.A.) — part of the whole body of Christ — takes seriously Christ's mandate to witness to the good news throughout the world.



Through the Global Mission Unit the PC(USA):

- Reaches out to people at home and all over the world by working in partnership with other Christian churches on regional and national levels
- Promotes unity among all Christians and understanding with people of living faiths by encouraging dialogue, providing educational resources, and supporting and being involved in ecumenical organizations
- Recognizes the necessity of Christians of other traditions and cultures ministering to the PC(USA), helping us to learn and grow in faith
- Supports programs of health ministry and education through medical institutions of partner churches who are placing their greatest priority on helping the most vulnerable members of God's community
- Recruits and supports people with the call to serve Christ in many capacities as missionaries and long- or short-term volunteers both overseas and in the United States

Partnership in Mission Office

Witnesses to the good news throughout the world:

- By entering into and maintaining partnerships with churches and other organizations and institutions all over the world
- By coordinating the human and material resources for work with partner churches in the development and mission of Christ's church in the world
- By working with the Evangelism and Church Development Unit of PC(USA) and overseas church partners to reach those who have not yet received Jesus Christ
- By cooperating with the Committee on Higher Education to coordinate global education programs

Through this office, area associates for Southeast Asia, South America, Middle East/South Asia, East Asia/Pacific, Europe, East/West Africa, Southern Africa and Central America/Mexico/Caribbean relate directly to our overseas partners, listening to their voices as we seek new and creative ways to be in mission with one another while respecting the autonomy and integrity of one another.



Ecumenical/Interfaith Relations Office

Participates in the quest for unity:

- By facilitating and providing educational opportunities for a deeper and more widespread understanding of and commitment to God's desire for the human family to become one
- By encouraging and enabling genuine dialogue with other Christian churches and persons of other faiths through local, regional, national and international efforts
- By advocating support and involvement in ecumenical agencies and their programs

The staff in this office share in developing a program throughout the PC(USA) that seeks to deepen both communication and trust between the PC(USA) and its global partners and between the Global Mission Unit, local congregations and middle governing bodies endeavoring to make the unity of the church more visible.



Mutual Mission Office

Brings together people of faith:

- By enabling and encouraging partnerships between presbyteries and synods in the United States and partners in other countries
- By encouraging the PC(USA) to request, receive and rejoice in opportunities to learn from people in mission to the United States
- By advocating the involvement of individuals and groups from our churches in cross-cultural experiences through travel, study, and work camps
- By helping people through mission education to become advocates for the global mission of the church
- By developing networks to coordinate efforts for mission and global awareness

Mission is a two-way street. Staff of this office enable Presbyterians to experience reciprocity in mission through experiential learning programs and interpretive resource materials. They are ready to work with middle governing bodies and institutions to encourage global awareness and understanding of global mission.



Health Ministries Office

Understands and works for the concept of health as wholeness of mind, body and spirit:

- By supporting programs of partner churches and institutions which place their priority on the most vulnerable members of society
- By working with and supporting programs to alleviate the causes and treat problems of illness all over the world
- By supporting the training of indigenous leadership (both health professionals and paraprofessionals) in skills and technology appropriate to local conditions

To ensure the best possible stewardship of resources, health programs are linked to water, agricultural and other development projects. The staff works closely with international partner institutions as well as with other denominations to provide funds, medical equipment, supplies and personnel.



People in Mission Office

- Recruits people to serve as long-term missionaries, or co-workers, and mission volunteers in the United States and overseas
- Provides the support system for all mission personnel under assignment, including financial, personal development; and mental, physical, emotional and spiritual health
- Is involved with each of the other areas in the Global Mission Unit, reviewing requests, monitoring missionary roles and responsibilities, and exploring new areas of potential service
- Facilitates communication about missionary responsibilities with the General Assembly Council and its units and other governing bodies and congregations

The staff help in developing systems for decision-making and communicating about missionary responsibilities. They work for more effective sharing of resources through ecumenical partners and through three-way mission programs in the deployment, recruitment and training of personnel.

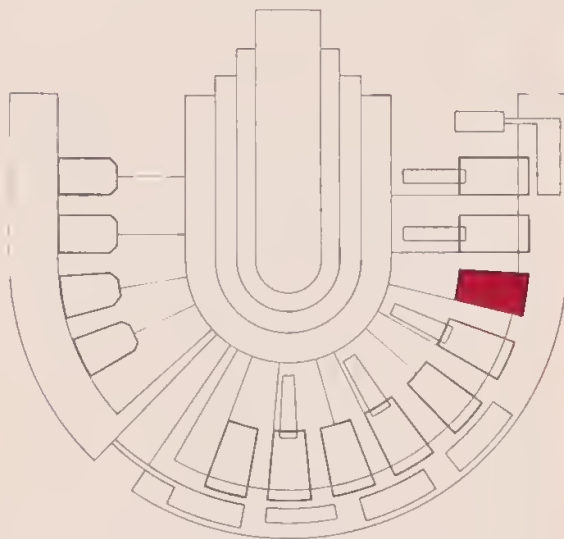


The Presbyterian Church (U.S.A.)
— part of the whole body of Christ —
through the
Global Mission Unit
works through *people*

- *People* in partnership with overseas churches and institutions in 80 countries all over the world
- *People* engaged in the quest for Christian unity as a sign of God's purpose for the whole human family
- *People* learning from, experiencing with, relating to Christians of other cultures and growing together as we recognize that the United States is a mission field
- *People* with special gifts and skills of compassion and healing at work throughout this broken and hurting world

People throughout the
Presbyterian Church (U.S.A.)
through their
prayers,
gifts
and
commitment
participate in ministry
and
make it possible.

Structural Design for Mission Presbyterian Church (U.S.A.)



■ Global Mission Unit

Presbyterian Church (U.S.A.)
Global Mission Unit
100 Witherspoon Street
Louisville, KY 40202-1396

For more information please write the
above address or call:

Director's Office:

(502) 569-5347, 5349

Partnership in Mission Office:

(502) 569-5351

Ecumenical/Interfaith Relations Office:

(502) 569-5302

Mutual Mission Office:

(502) 569-5236

People in Mission:

(502) 569-5274

Health Ministries:

(502) 569-5276

DMS 245-89-004

The Presbyterian Church (USA) wholeheartedly shares in this very basic and tremendously vital ministry. Three of our missionary families have been assigned to East Africa, West Africa, and Southern Africa especially to help coordinate an effective and practical PC(USA) involvement in this ministry.

HAND IN HAND we **CAN** directly help others half a world away.

Please direct your extra commitment contribution as an individual, church, or Presbytery payable to:

"PRESBYTERIAN CHURCH (USA)"

Clearly mark on your check:

**"ECO # 404902
Project For Evangelism And
Church Growth In Africa"**

**Central Receiving
Presbyterian Church (USA)
100 Witherspoon St.
Louisville, KY 40202**

You may also contribute through:

**The Outreach Foundation
P.O. Box 221095
Charlotte, NC 28222**

EVANGELISM AND CHURCH GROWTH IN AFRICA



PRESBYTERIAN CHURCH (USA)

Your contribution **WILL** make a difference.

For more information concerning the project's progress you are welcomed to contact your Africa Office, Office on International Evangelism, or Outreach Foundation representative at the addresses listed above.

SPREADING THE GOSPEL OF JESUS CHRIST remains at the very center of our Presbyterian global mission.

In Africa, this message is visibly alive and vigorously practiced through the

**PROJECT FOR EVANGELISM
AND CHURCH GROWTH IN AFRICA**

IN THE 1980's:

We explored new and exciting ways in which to effectively work with our African sisters and brothers as they sought to:

- **PREACH THE GOSPEL**
- **BUILD SHELTERS AND SANCTUARIES FOR CHRISTIAN WORSHIP**
- **ERECT BASIC CHURCH SCHOOLS FOR THEIR CHILDREN**
- **TRAIN NEW EVANGELISTS FOR THE MINISTRY**



A sister church in Zaire recently erected through an African - PC(USA) partnership.

These inspiring successes seen in the villages and towns of Zaire, Ghana, and Lesotho **challenge** us to expand this work across the continent.

INTO THE 1990's:

WE NEED YOUR HELP!

African churches are not looking for hand-outs. Indeed, our African partners contribute according to their ability and beyond. There still remain many obstacles and limits in Africa.

Today, what our African partners urgently need are necessary resources obtainable only with your help.

Your contribution, no matter how modest, can help purchase a bag of cement for a church building, help obtain Christian literature for a Bible class, or help provide a roof for a Christian school.



A Presbyterian congregation celebrates after collecting enough local funds to complete their church's steeple.

THE CHALLENGE IS BEFORE US. . .

- **BUILD A CHURCH**
- **ERECT A SCHOOL**
- **TRAIN A CHURCH LEADER**
- **SPREAD THE GOSPEL**

For further information write or call:

Global Mission Unit
Room 3227
100 Witherspoon Street
Louisville, KY 40202-1396
(502) 569-5318

Mission Funding
Room 2071
100 Witherspoon Street
Louisville, KY 40202-1396
(502) 569-5860



**A Call
to Advance
in
Global Mission**

**New Missionary
Challenge for the
Presbyterian Church
(U.S.A.)**



Mandates for Mission

The Presbyterian Church (U.S.A.), with its adoption of the 1985 *Life and Mission Statement*, the *Structural Design for Mission* and actions of recent General Assemblies, has mandated that through the Global Mission Unit the Presbyterian Church (U.S.A.) is called to:

- Go into the world to make disciples... evangelize... reach persons who have not yet heard the gospel
- Enable the Presbyterian Church (U.S.A.) to demonstrate the new reality of Christ in the life of the church and to participate in God's activity in the world
- Join with partner churches throughout the world in responding to human and spiritual need on all six continents
- Receive the gifts, insights and challenges of the global Christian community in order to renew and strengthen its life and witness in the United States
- Participate faithfully in the ecumenical movement and the search for Christian unity and interfaith understanding

A Call from Our Global Partners

We are disappointed that the Presbyterian Church has been unable to respond with personnel in answer to our requests in evangelism, health and educational ministries.

—All Continents

If our civil war ends, it is important to remember that the desperate situation in the Sudan will not. After our last war ended, everyone thought we were all right. The Presbyterian Church was not able to help us. When the war ends we will still have desperate needs in helping displaced people, feeding the hungry and educating the public. I hope the Presbyterians will help us this time.

—Africa

Asia has changed and is changing. While we appreciate what has been done in the past, we look forward to people with a new vision and commitment to come and participate with us in our land. Our people were once primarily rural; now we are industrialized and urbanized. We have never faced this situation before. We hope you will help us in these new societies.

—Asia

If only the American church could but sit back and listen, sit back and receive the gifts that the Third World church has to offer . . . Third World Christians could help Americans realize how much there is within the body of Christ which we must both give and receive.

—Indonesia

(The above statements come directly from our global church partners or represent a composite of their remarks.)

The Advance . . .

With 80 Long-Term Missionaries

In response to the call of our global partners this advance will enable us to begin answering their eloquent summons for renewed participation with them in mission.

The General Assembly has called the Presbyterian Church (U.S.A.) both to build on the strong missionary heritage and to reach out with new vigor. A goal of 550 full-time missionaries by 1992 is set — sustaining present numbers and appointing 80 new mission co-workers/missionaries.

This will enable the Presbyterian Church (U.S.A.) to respond with vigor to many unmet needs in areas of:

- Evangelism
- Church development

And through specialized ministries of:

- Health
- Education
- Community development

As well as ministries of:

- Peace
- Justice

With 80 Additional Missionaries in New Categories of Missionary Service

Faithfulness in global mission requires that new missionary advances by the Presbyterian Church (U.S.A.) include more than our PC(USA) missionary co-workers.

It must include:

- Three-Way Mission with overseas partner churches
- Mission Diaconates as short-term missionaries
- Mission to the U.S.A. personnel serving presbyteries, synods, institutions in the United States

This fresh advance in patterns of mission service will enable:

- 35 qualified mission personnel from Third World church partners to accept assignments in other nations through the Three-Way Mission program
- 35 short-term missionaries to serve through the Mission Diaconate program
- 10 or more Mission to the U.S.A. personnel assignments for ministry within the PC(USA)

The Challenge . . .

To the Presbyterian Church (U.S.A.)

The mission advances represent a significant funding challenge for the church. It calls for:

- A phased in five-year Extra Commitment program in addition to the basic General Assembly budget and the Bicentennial Fund.
- A strategy to sustain the proposed level beyond the five-year plan.

The Extra Commitment money needed to:

- Advance with 80 new mission co-workers/missionaries = \$11,657,550
- Advance with 80 additional missionaries in new categories of service = \$1,575,000

Total Needed:
\$13,232,550

To Members and Congregations

Members of the Presbyterian Church (U.S.A.) are challenged to respond to this call to advance in Global Mission. Your prayers and gifts are needed if this is to be a true advance. It sounds like a lot of money is needed through Extra Commitment — and it is — but, if every member contributes, we will meet this challenge.

Your gifts and contributions may be sent through the Extra Commitment Opportunity program.

Make your check payable to:
Presbyterian Church (U.S.A.)

Mark it:
Extra Commitment Opportunity
#864000

Send to:
Your Presbytery or Synod
Receiving Agency

or
Central Receiving Service
100 Witherspoon Street
Louisville, KY 40202-1396

ECUMENICAL EXCHANGES

U.S. Presbyterians have much to learn about faith from Christians in other parts of the world. The concept of ecumenical exchange is that effective learning takes place when people experience life in the setting of partners in the faith, "walking in the shoes" of brothers and sisters who happen to live in another part of the world. Also, our partners help us to see new dimensions of faith as they come to participate in church life in our country.

The exchange may be effected with partners of our own faith tradition, or we may be challenged to grow by viewing faith through the eyes of those whose heritage has led their forebears along quite different paths. Each experience of exchange is selected as an opportunity to widen perspectives on belief and to increase the spiritual dimension of the participants. Our focus is on ways we might become aware of and share our mutual strengths and needs.

CODE OF ETHICS FOR TOURISTS

Developed by the Christian Conference of Asia

1. Travel in a spirit of humility and with a genuine desire to meet and talk with the local people.
2. Be aware of the feelings of other people, thus preventing what might be offensive behavior. Remember this with photography especially.
3. Cultivate the habit of listening and observing rather than merely hearing and seeing.
4. Realize that people in the country you visit often have time concepts and thought patterns different from your own. Not inferior, just different.
5. Discover the enrichment that comes from seeing another way of life rather than looking for the "beach paradise" of the tourist posters.
6. Acquaint yourself with local customs, respect local customs; people will be happy to help you.
7. Cultivate the habit of asking questions instead of the western practice of knowing all the answers.
8. Remember that you are only one of thousands of visiting tourists. Do not expect special privileges.
9. Spend wisely. If you really want a home away from home, why travel?
10. Remember when shopping that the bargain you obtain is only possible because of the low wages paid to the maker.
11. Make no promises to local people unless you are certain that you can fulfill them.
12. Reflect daily on your experiences; seek to deepen your understanding. "What enriches you may rob or violate others."



For additional information, please write or call:

Ecumenical Exchanges
Global Mission Unit
100 Witherspoon Street
Louisville, KY 40202-1396

(502) 569-5259
(502) 569-5256



ECUMENICAL EXCHANGES

GLOBAL MISSION MINISTRY UNIT

PRESBYTERIAN CHURCH (USA)



THE PROGRAM

I. ECUMENICAL TRAVEL-STUDY SEMINARS

The Global Mission Unit sponsors short-term overseas group learning experiences:

1. International Involvement Experiences

Groups of 15-20 North American Christians travel to other countries for a period of 2-3 weeks to interact with members of host churches in partner communities and to learn about the ministry of partner churches. These human exchanges across cultural and language barriers give North Americans the chance to see and experience values, religious traditions, and lifestyles different from, but just as valid as, their own. The program offers individual Christians the opportunity to travel in a group with others who share common values and concerns.

2. Gift of New Eyes—

a program designed for Presbyterians in leadership positions in the church:

Participants are placed in a situation of cultural minority so that they might be compelled to see themselves, their church and their society through the eyes of fellow Christians from another culture. The program's purpose is to challenge the group members to see with more clarity the meaning of the Gospel for us in the United States today. The experience is expected to affect the way in which mission is conceived and carried out at the presbytery and congregational level.

3. I.D.E.A. (International Designs for Economic Awareness)—

a program carried out at present by the Synods of Lakes and Prairies, Covenant and Mid-Atlantic, together with the Global Mission Unit:

The goal of I.D.E.A. is that all levels of the church shall engage in mission with a global dimension. Its aim is to seek changes in personal attitudes, institutional performance and public policy related to Third World economic justice concerns. I.D.E.A. develops ways to assist middle governing bodies in their goal of guiding church members and pastors so they can become personally responsible and meaningfully involved in a mission of economic justice.



The PC (USA) participates in Ecumenical Partner-sponsored exchanges.

The Global Mission Unit cooperates with the Travel Seminar program of the National Council of the Churches of Christ (NCC) in the U.S.A.

Seminars are designed to make visible the unity of the global Christian community; to learn what God is doing through churches, cultures and societies in all parts of the world; to learn what God requires of us in working together for a just and peaceful global community; and to build and maintain a network of Christian communities in all parts of the world who share their faith experiences and work together for an abundant life for all.

II. WORK CAMPS

Intergenerational

Small groups from local congregations or presbyteries are invited to assist partner churches that have suffered from destruction of hurricanes, earthquakes, etc., or from the devastation of economic failure in their country. Some partner churches also seek assistance in English language studies led by the work groups which visit their countries for 2-6 weeks. Participants live in homes, schools or churches of the hosts and enjoy sharing culture and faith as language skills and work are shared.



III. YOUTH

(Joint Program with Global Youth Ministry Office, Education and Congregational Nurture Unit, Room 5132.)

1. Workcamps

The Global Youth Ministry Office plans with the Ecumenical Exchange office special overseas work camps for high school youth groups.

2. Youth in Mission

The Global Youth Ministry Office, in conjunction with Ecumenical Exchange Office, arranges for college-age young people to serve with partner churches. Individuals are given an 8-12 week opportunity to experience ministry in the global context.

MISSION TO THE U.S.A. STANDS READY

- to help in the designing of Mission to the U.S.A. projects and in the formulation of requests for overseas personnel needed for them
- to recruit the overseas personnel approved for these projects
- to provide the documentation required for exit permits and U.S. visas
- to provide sickness/accident insurance coverage for Mission to the U.S.A. personnel
- to offer port-of-entry assistance and hospitality to overseas personnel
- to pay up to one-half the cost of direct round-trip travel, from place of residence to place of assignment for Mission to the U.S.A. personnel
- to suggest study resources for Mission to the U.S.A. projects
- to offer advice about orientation, evaluation and follow-up
- to share with the Presbyterian Church (U.S.A.) and partner churches overseas what has been learned from the Mission to the U.S.A. experience

A PERSON SEES
WHAT LOOKS LIKE AN ANIMAL
ON A FAR-OFF MOUNTAINSIDE.

COMING CLOSER,
THE PERSON NOTICES THAT
IT IS A HUMAN BEING.

CLOSER STILL,
THE PERSON DISCOVERS THAT
IT IS A BROTHER.

-A Sufi fable



For additional information, please write or call:

Mission to the U.S.A.
100 Witherspoon Street
Louisville, KY 40202-1396

(502) 569-5260
(502) 569-5256



MISSION TO THE U.S.A.

GLOBAL MISSION MINISTRY UNIT

PRESBYTERIAN CHURCH (USA)



MISSION TO THE U.S.A.

- a program of the Global Mission Unit of the Presbyterian Church (U.S.A.)
- assists congregations, presbyteries, synods, seminaries, church camps and conferences and others, to utilize the gifts of experience, faith and understanding which overseas colleagues bring to strengthen the mission of the Church
- acknowledges the needs of the Church in North America and reminds it that global mission is 'here' as well as 'over there'.
- makes real a world-wide network of Christians working for a just and peaceful future

COMMENTS BY OVERSEAS COLLEAGUES:

It is important to build bridges.

The Church in the U.S.A. must be prepared to listen to what other churches have to say in Third World countries, on matters of justice, peace and race relations.

Very important work. We thought when we started that it was not a very helpful way to build relationships between churches or to help inform people. But now we think that this is the best way to explain and make clear many church- and mission-related issues.

The programme can very well be a model for other churches which are open to global realities.

Some of the issues were new to many people, but they were quite receptive and open to these new and strange ideas. I do not know what impact they have had on the participants, but I enjoyed their comments and questions. Judging from the discussions I have had with a few individuals outside formal sessions, I feel that some of them have taken seriously the questions about life-style, spirituality and dialogue with other faiths. I hope these can be followed up.

U.S.A.—A MISSION FIELD

"Mission" means "overseas mission".
"Mission field" means "the Third world."

These assumptions need to be challenged. North America is a, if not the, most difficult and important mission field in today's world.

This is what our overseas colleagues have been saying to us. "You North Americans have the power to determine how we shall live and die, and whether the world will long survive."

How shall we work together to make sure there will be a future worth having? Mission to the U.S.A. invites us to join in the quest for an answer.

COMMENTS BY U.S. HOSTS:

This experience was one of the best in my short seven years of ministry. I am glad for the opportunity the General Assembly provides congregations to host visiting ministers.

(To a departing Ecumenical Associate): "You have helped us to perceive the struggles of your people, who are living in the harsh land under extremely difficult conditions. The word-pictures which you drew for us will forever remain, and will go a long way in strengthening our resolve to do what we can to bring peace in your troubled part of the world."

The Mission to the U.S.A. program is truly one of the great strengths of our Church.

Our understanding of "mission" and the Lord whom we all serve deepens as we learn from these fellow Christians how important their faith is to them, and as they help us to revitalize ours.

As a result of this endeavor, none of us will be able to think about Third World issues in the same way as before. The interrelatedness of our suffering and our redemption is much clearer. There is a new, more urgent consciousness of the poor, both in our immediate midst and in our larger human family.

IN ONE YEAR, SIXTY THREE COLLEAGUES CAME FROM:

Australia
Brazil
Burma
Cameroun
Costa Rica
China
Cuba
Czechoslovakia
Dominican Republic
East Germany
Egypt
Ethiopia
Ghana
Hong Kong
India
Israel
Jamaica
Jordan
Kenya
Korea
Lebanon
Nicaragua
Philippines
Roumania
S. Africa
Sri Lanka
Syria
Taiwan
Trinidad and Tobago
United Kingdom

SERVING IN THE PRESBYTERIES OF:

Baltimore, Beaver-Butler, Carlisle, Chicago, de Cristo, Dakota, Detroit, Genesee Valley, Grand Canyon, Hudson River, Huntingdon, Kiskiminetas, Lackawanna, Lake Michigan, Long Island, Louisville, Mackinac, Maumee Valley, Miami, Muskingum Valley, Philadelphia, Pittsburgh, Prospect Hill, Redstone, San Francisco, Santa Fe, Scioto Valley, Shenango, South Alabama, Southern New England, Upper Ohio Valley.

AND THE SYNODS OF:

Lakes and Prairies, Pacific, Covenant, Southern California and Hawaii.

PARTNERSHIP EXPERIENCE

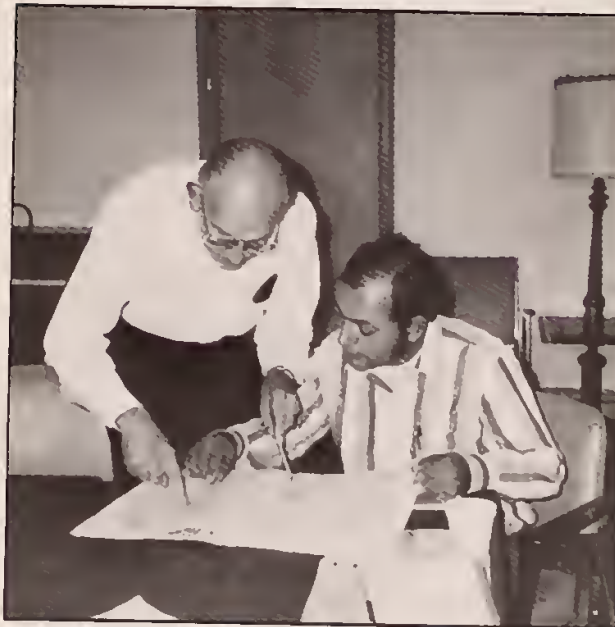
"(Africans) explain that partnership, of which we speak so much, is only possible if there is give-and-take. There is no partnership relation where one only gives and the other only receives...But in real sharing both partners get enriched and this is a great chance, an encouragement to get involved more and more deeply." —Quote from *Cultures and Crossroads* by I.H. Frempong and B. Bassi, in Ghana.



"We need the witness of the whole ecumenical family if we are to be authentic witnesses of Christ to our own culture...The fact that Jesus is much more than, much greater than our culture-bound vision of him can only come home to us through the witness of those who see him with other eyes...We need their witness to correct ours, as indeed they need ours to correct theirs. At this moment our need is greater..." —Leslie Newbigin in *Foolishness to the Greeks* (Wm. B. Eerdmans Publishing Co.).



"There is no substitute for the personalization of mission as expressed through people from other lands!" —Richard Bass, Executive Presbyter, Savannah Presbytery in partnership with the National Presbyterian Church of Mexico.



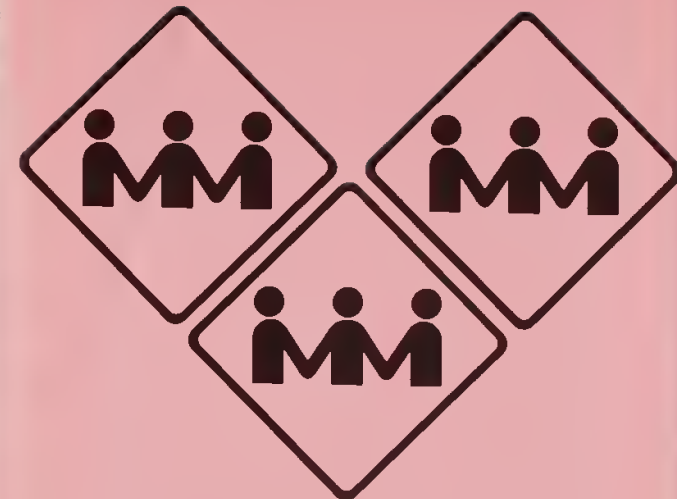
global
MISSION

For additional information, please write or call:

Presbytery/Synod
International Partnerships
100 Witherspoon Street
Louisville, KY 40202-1396

(502) 569-5261
(502) 569-5255

DMS # 24589002



PRESBYTERY / SYNOD
INTERNATIONAL
PARTNERSHIPS

GLOBAL MISSION
MINISTRY UNIT

PRESBYTERIAN CHURCH (USA)

MUTUAL MISSION THROUGH PRESBYTERY AND SYNOD PARTNERSHIPS

The Global Mission Ministry Unit recognizes the varieties of faith experiences of Christians in other countries as well as the gifts which overseas partner churches have to offer for the sake of mission. Given the opportunity to share these experiences and gifts, our lives and theirs may be enriched and changed.

The Presbytery/Synod International Partnership program, under the direction of the Mutual Mission Office of the Global Mission Unit, enables presbyteries and synods to enter into mutually beneficial relationships with overseas churches. These partnerships strengthen the total mission of the church as they provide opportunity for:

- more direct involvement in the global ministries of the Presbyterian Church (U.S.A.)
- vital and meaningful relationships with Christian communities in other lands
- a new sense of the oneness of the Church around the world
- a greater understanding of other people, their culture and their faith experience
- individual spiritual growth and a deeper commitment to the mission of the Church
- a broadened base of understanding and support for the whole mission of the Church.

The partnership approach to mission is based on the biblical understanding of 'koinonia', which the Apostle Paul interpreted as "working together for the Gospel." This suggests that we are not only to serve our sisters and brothers in other lands, but that we are also to seek the help which they can offer us from the rich resources of their faith and experience. We need to listen and to learn from Christians whose lives and faith are shaped by other cultures... "so that we may be mutually encouraged by each other's faith" (Romans 1:12).

PARTNERSHIP ACTIVITIES

Partnerships are designed to respond to different kinds of needs in the presbytery or synod, as well as in the overseas churches. A partnership is ordinarily with an equivalent church body (presbytery to presbytery; synod to synod) or with an ecumenical agency doing mission in another country. An agreement is always worked out with the partner church or agency for the greatest mutual benefit.

Some examples of partnership activities are:

- Exchange of information about church, mission and current issues
- Intercessory prayer and common Bible studies
- Exchange visits for study and service
- Evangelism and new church development
- Hunger, health and development projects
- Social justice and peacemaking efforts.

STARTING A PARTNERSHIP

IDENTIFY... What are the needs of your presbytery or synod that might be met by an overseas partner? What do you have to offer that will strengthen the mission of the church in another country?

BE IN TOUCH... with the Mutual Mission Office of the Global Mission Unit of the PC(USA). The Mutual Mission Office will provide you with Principles and Guidelines which have been prepared to assist you in developing an international partnership. The Global Mission Unit staff will also assist in identifying a potential partner and in making the initial formal contact with leaders of that church or agency.

EXCHANGE INFORMATION... When an overseas partner has been identified and they have indicated an interest in developing a partnership, an exchange of information is helpful to learn about each other, as well as to learn about your respective needs and expectations.

PREPARE A PROPOSAL... which gives an outline of your reasons for the partnership as well as your expectations. The proposal should be reviewed and approved by the Executive Committee or Council of your Presbytery, and then be sent to the Mutual Mission Office for preliminary approval.

NEGOTIATE... the specific objectives and commitments of the partnership with the designated leaders of the partner church. This may be done directly in face-to-face meetings or by correspondence.

COMPLETE... a Memorandum of Understanding. This agreement must be approved by the presbytery or synod, the partner church and the Global Mission Unit Committee.

The Presbyterian Church (USA) wholeheartedly shares in this very basic and tremendously vital ministry. Three of our missionary families have been assigned to East Africa, West Africa, and Southern Africa especially to help coordinate an effective and practical PC(USA) involvement in this ministry.

HAND IN HAND we **CAN** directly help others half a world away.

Please direct your extra commitment contribution as an individual, church, or Presbytery payable to:

"PRESBYTERIAN CHURCH (USA)"

Clearly mark on your check:

**"ECO # 404902
Project For Evangelism And
Church Growth In Africa"**

**Central Receiving
Presbyterian Church (USA)
100 Witherspoon St.
Louisville, KY 40202**

You may also contribute through:

**The Outreach Foundation
P.O. Box 221095
Charlotte, NC 28222**

EVANGELISM AND CHURCH GROWTH IN AFRICA



PRESBYTERIAN CHURCH (USA)

Your contribution **WILL** make a difference.

For more information concerning the project's progress you are welcomed to contact your Africa Office, Office on International Evangelism, or Outreach Foundation representative at the addresses listed above.

SPREADING THE GOSPEL OF JESUS CHRIST remains at the very center of our Presbyterian global mission.

In Africa, this message is visibly alive and vigorously practiced through the

**PROJECT FOR EVANGELISM
AND CHURCH GROWTH IN AFRICA**

IN THE 1980's:

We explored new and exciting ways in which to effectively work with our African sisters and brothers as they sought to:

- **PREACH THE GOSPEL**
- **BUILD SHELTERS AND SANCTUARIES FOR CHRISTIAN WORSHIP**
- **ERECT BASIC CHURCH SCHOOLS FOR THEIR CHILDREN**
- **TRAIN NEW EVANGELISTS FOR THE MINISTRY**



A sister church in Zaire recently erected through an African - PC(USA) partnership.

These inspiring successes seen in the villages and towns of Zaire, Ghana, and Lesotho **challenge** us to expand this work across the continent.

INTO THE 1990's:

WE NEED YOUR HELP!

African churches are not looking for hand-outs. Indeed, our African partners contribute according to their ability and beyond. There still remain many obstacles and limits in Africa.

Today, what our African partners urgently need are necessary resources obtainable only with your help.

Your contribution, no matter how modest, can help purchase a bag of cement for a church building, help obtain Christian literature for a Bible class, or help provide a roof for a Christian school.



A Presbyterian congregation celebrates after collecting enough local funds to complete their church's steeple.

THE CHALLENGE IS BEFORE US. . .

- **BUILD A CHURCH**
- **ERECT A SCHOOL**
- **TRAIN A CHURCH LEADER**
- **SPREAD THE GOSPEL**

For further information write or call:

Global Mission Unit
Room 3227
100 Witherspoon Street
Louisville, KY 40202-1396
(502) 569-5318

Mission Funding
Room 2071
100 Witherspoon Street
Louisville, KY 40202-1396
(502) 569-5860



**A Call
to Advance
in
Global Mission**

**New Missionary
Challenge for the
Presbyterian Church
(U.S.A.)**



Mandates for Mission

The Presbyterian Church (U.S.A.), with its adoption of the 1985 *Life and Mission Statement*, the *Structural Design for Mission* and actions of recent General Assemblies, has mandated that through the Global Mission Unit the Presbyterian Church (U.S.A.) is called to:

- Go into the world to make disciples... evangelize... reach persons who have not yet heard the gospel
- Enable the Presbyterian Church (U.S.A.) to demonstrate the new reality of Christ in the life of the church and to participate in God's activity in the world
- Join with partner churches throughout the world in responding to human and spiritual need on all six continents
- Receive the gifts, insights and challenges of the global Christian community in order to renew and strengthen its life and witness in the United States
- Participate faithfully in the ecumenical movement and the search for Christian unity and interfaith understanding

A Call from Our Global Partners

We are disappointed that the Presbyterian Church has been unable to respond with personnel in answer to our requests in evangelism, health and educational ministries.

—All Continents

If our civil war ends, it is important to remember that the desperate situation in the Sudan will not. After our last war ended, everyone thought we were all right. The Presbyterian Church was not able to help us. When the war ends we will still have desperate needs in helping displaced people, feeding the hungry and educating the public. I hope the Presbyterians will help us this time.

—Africa

Asia has changed and is changing. While we appreciate what has been done in the past, we look forward to people with a new vision and commitment to come and participate with us in our land. Our people were once primarily rural; now we are industrialized and urbanized. We have never faced this situation before. We hope you will help us in these new societies.

—Asia

If only the American church could but sit back and listen, sit back and receive the gifts that the Third World church has to offer . . . Third World Christians could help Americans realize how much there is within the body of Christ which we must both give and receive.

—Indonesia

(The above statements come directly from our global church partners or represent a composite of their remarks.)

The Advance . . .

With 80 Long-Term Missionaries

In response to the call of our global partners this advance will enable us to begin answering their eloquent summons for renewed participation with them in mission.

The General Assembly has called the Presbyterian Church (U.S.A.) both to build on the strong missionary heritage and to reach out with new vigor. A goal of 550 full-time missionaries by 1992 is set — sustaining present numbers and appointing 80 new mission co-workers/missionaries.

This will enable the Presbyterian Church (U.S.A.) to respond with vigor to many unmet needs in areas of:

- Evangelism
- Church development

And through specialized ministries of:

- Health
- Education
- Community development

As well as ministries of:

- Peace
- Justice

With 80 Additional Missionaries in New Categories of Missionary Service

Faithfulness in global mission requires that new missionary advances by the Presbyterian Church (U.S.A.) include more than our PC(USA) missionary co-workers.

It must include:

- Three-Way Mission with overseas partner churches
- Mission Diaconates as short-term missionaries
- Mission to the U.S.A. personnel serving presbyteries, synods, institutions in the United States

This fresh advance in patterns of mission service will enable:

- 35 qualified mission personnel from Third World church partners to accept assignments in other nations through the Three-Way Mission program
- 35 short-term missionaries to serve through the Mission Diaconate program
- 10 or more Mission to the U.S.A. personnel assignments for ministry within the PC(USA)

The Challenge . . .

To the Presbyterian Church (U.S.A.)

The mission advances represent a significant funding challenge for the church. It calls for:

- A phased in five-year Extra Commitment program **in addition to** the basic General Assembly budget and the Bicentennial Fund.
- A strategy to sustain the proposed level beyond the five-year plan.

The Extra Commitment money needed to:

- Advance with 80 new mission co-workers/missionaries = \$11,657,550
- Advance with 80 additional missionaries in new categories of service = \$1,575,000

Total Needed:
\$13,232,550

To Members and Congregations

Members of the Presbyterian Church (U.S.A.) are challenged to respond to this call to advance in Global Mission. Your prayers and gifts are needed if this is to be a true advance. It sounds like a lot of money is needed through Extra Commitment — and it is — but, if every member contributes, we will meet this challenge.

Your gifts and contributions may be sent through the Extra Commitment Opportunity program.

Make your check payable to:

Presbyterian Church (U.S.A.)

Mark it:

Extra Commitment Opportunity
#864000

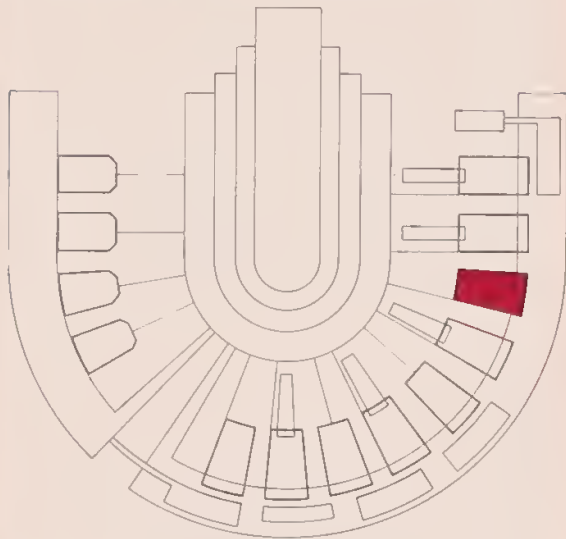
Send to:

Your Presbytery or Synod
Receiving Agency

or

Central Receiving Service
100 Witherspoon Street
Louisville, KY 40202-1396

**Structural Design for Mission
Presbyterian Church (U.S.A.)**



■ **Global Mission Unit**

Presbyterian Church (U.S.A.)
Global Mission Unit
100 Witherspoon Street
Louisville, KY 40202-1396

For more information please write the
above address or call:

Director's Office:

(502) 569-5347, 5349

Partnership in Mission Office:

(502) 569-5351

Ecumenical/Interfaith Relations Office:

(502) 569-5302

Mutual Mission Office:

(502) 569-5236

People in Mission:

(502) 569-5274

Health Ministries:

(502) 569-5276

DMS 245-89-004



Global Mission Unit

The Presbyterian Church (U.S.A.) — part of the whole body of Christ — takes seriously Christ's mandate to witness to the good news throughout the world.



Through the Global Mission Unit the PC(USA):

- Reaches out to people at home and all over the world by working in partnership with other Christian churches on regional and national levels
- Promotes unity among all Christians and understanding with people of living faiths by encouraging dialogue, providing educational resources, and supporting and being involved in ecumenical organizations
- Recognizes the necessity of Christians of other traditions and cultures ministering to the PC(USA), helping us to learn and grow in faith
- Supports programs of health ministry and education through medical institutions of partner churches who are placing their greatest priority on helping the most vulnerable members of God's community
- Recruits and supports people with the call to serve Christ in many capacities as missionaries and long- or short-term volunteers both overseas and in the United States

Partnership in Mission Office

Witnesses to the good news throughout the world:

- By entering into and maintaining partnerships with churches and other organizations and institutions all over the world
- By coordinating the human and material resources for work with partner churches in the development and mission of Christ's church in the world
- By working with the Evangelism and Church Development Unit of PC(USA) and overseas church partners to reach those who have not yet received Jesus Christ
- By cooperating with the Committee on Higher Education to coordinate global education programs

Through this office, area associates for Southeast Asia, South America, Middle East/South Asia, East Asia/Pacific, Europe, East/West Africa, Southern Africa and Central America/Mexico/Caribbean relate directly to our overseas partners, listening to their voices as we seek new and creative ways to be in mission with one another while respecting the autonomy and integrity of one another.



Ecumenical/Interfaith Relations Office

Participates in the quest for unity:

- By facilitating and providing educational opportunities for a deeper and more widespread understanding of and commitment to God's desire for the human family to become one
- By encouraging and enabling genuine dialogue with other Christian churches and persons of other faiths through local, regional, national and international efforts
- By advocating support and involvement in ecumenical agencies and their programs

The staff in this office share in developing a program throughout the PC(USA) that seeks to deepen both communication and trust between the PC(USA) and its global partners and between the Global Mission Unit, local congregations and middle governing bodies endeavoring to make the unity of the church more visible.



Mutual Mission Office

Brings together people of faith:

- By enabling and encouraging partnerships between presbyteries and synods in the United States and partners in other countries
- By encouraging the PC(USA) to request, receive and rejoice in opportunities to learn from people in mission to the United States
- By advocating the involvement of individuals and groups from our churches in cross-cultural experiences through travel, study, and work camps
- By helping people through mission education to become advocates for the global mission of the church
- By developing networks to coordinate efforts for mission and global awareness

Mission is a two-way street. Staff of this office enable Presbyterians to experience reciprocity in mission through experiential learning programs and interpretive resource materials. They are ready to

work with middle governing bodies and institutions to encourage global awareness and understanding of global mission.



Health Ministries Office

Understands and works for the concept of health as wholeness of mind, body and spirit:

- By supporting programs of partner churches and institutions which place their priority on the most vulnerable members of society
- By working with and supporting programs to alleviate the causes and treat problems of illness all over the world
- By supporting the training of indigenous leadership (both health professionals and paraprofessionals) in skills and technology appropriate to local conditions

To ensure the best possible stewardship of resources, health programs are linked to water, agricultural and other development projects. The staff works closely with international partner institutions as well as with other denominations to provide funds, medical equipment, supplies and personnel.



People in Mission Office

- Recruits people to serve as long-term missionaries, or co-workers, and mission volunteers in the United States and overseas
- Provides the support system for all mission personnel under assignment, including financial, personal development; and mental, physical, emotional and spiritual health
- Is involved with each of the other areas in the Global Mission Unit, reviewing requests, monitoring missionary roles and responsibilities, and exploring new areas of potential service
- Facilitates communication about missionary responsibilities with the General Assembly Council and its units and other governing bodies and congregations

The staff help in developing systems for decision-making and communicating about missionary responsibilities. They work for more effective sharing of resources through ecumenical partners and through three-way mission programs in the deployment, recruitment and training of personnel.



The Presbyterian Church (U.S.A.)
— part of the whole body of Christ —
through the
Global Mission Unit
works through *people*

- *People* in partnership with overseas churches and institutions in 80 countries all over the world
- *People* engaged in the quest for Christian unity as a sign of God's purpose for the whole human family
- *People* learning from, experiencing with, relating to Christians of other cultures and growing together as we recognize that the United States is a mission field
- *People* with special gifts and skills of compassion and healing at work throughout this broken and hurting world

People throughout the
Presbyterian Church (U.S.A.)
through their
prayers,
gifts
and
commitment
participate in ministry
and
make it possible.

General Assembly Internships

Six salaried, one-year internships are designed for young adults, 20-25 years of age, to serve and to learn in the General Assembly arena. Job descriptions for each internship, outlined below, are available upon request. AA/EEO is practiced. Deadline 2/15/89. Notification after 4/1/89. Due to restructuring of PC (USA) some positions may not be filled.

Council on Women and the Church (COWAC) Intern: 1 person to work on the eradication of sexism at all levels of the church, through providing resources to task forces on women and COWAC committees. Concern for women's issues and freedom to travel are needed.

United Nations Intern: 1 person to assist Program Agency work in Peace and International Affairs, involves monitoring specific issues in the United Nations Assembly proceedings and related organs, written and oral interpretations, and participation in the network of Non-Governmental Organizations. International relations and economic background preferred. Overseas experience helpful.

Global Mission Intern: 2 persons, former MVs, to assist in recruitment (desire to travel), program development, interpretation and administration. Public relations, communication skills a necessity.

Youth/Young Adult Program Interns: 2 persons to provide youth and young adult perspective to the continuing planning and resourcing of youth and young adult ministry. Responsibility will focus on relating to Peacemaking and Racial/Ethnic staff teams, maintaining communication network, planning for General Assembly Youth Advisory Delegates, planning and implementation of national and regional events.

Presbyterian Men Program Intern: 1 person to expand the resourcing services of Presbyterian Men into presbytery and synod men's council/task forces, especially in regard to recruitment of young men into active church life. Public relations and communication skills a necessity. Travel up to sixty percent of the time. Administrative skills required.

Mission Volunteers Staff



Morrisine Flenbaugh Smith
Associate
Missionary Recruitment



Rheta Jenkins
Secretary
Missionary Recruitment



Linda Crawford
Associate
Mission Volunteers/USA



Carol Lurty
Administrative Assistant
Mission Volunteers/USA



R. Michael Stuart
Associate
Mission Volunteers/Overseas



M. Muriel Burrows
Administrative Assistant
Mission Volunteers/Overseas



Calvin Holder
Program Assistant/USA



Vivian Hare
Program Assistant/Overseas

VOLUNTARY SERVICE BULLETIN

1989



PIM

PEOPLE
IN MISSION

Presbyterian Church (USA)
Mission Volunteers
Global Mission Unit
100 Witherspoon Street
Louisville, KY 40202-1396

Mission Volunteers

VOLUNTEERS in the global context are people who serve in a variety of patterns. Most volunteers serve from 2-3 years. Some are placed for brief periods of service (3-6 months). It is costly to support a volunteer: transportation, insurance, often orientation expense, provision for room/board and incidental expenses, especially when making a long-term commitment.

The Global Mission Ministry Unit (GMMU) of the Presbyterian Church (USA) has sought to develop flexible programs designed to meet the unique needs of all volunteers and of overseas partner churches (not necessarily Presbyterian) and institutions of those churches. For Mission Volunteers, "volunteer" is broadly defined as an active church member with special skills who contributes talents in service to others. There are two distinct patterns of service: Mission Volunteers, and Mission Diaconates. Both have in common an essentially *subsistence* level of support.

USA - projects provide room, board, minimum insurance coverage, and often, a small stipend and are responsible for orienting the volunteer to the assignment and to the work environment. * **ANY NEED FOR FINANCIAL ASSISTANCE MUST BE INDICATED ON THE APPLICATION.** Some scholarships are available.

Overseas - program has major focuses on education and health service opportunities. There are also some other opportunities in community development, agriculture, and some special assignments such as ones requiring basic accounting skills. All Mission Volunteer positions are supported in part by the inviting institution or program which usually makes some contribution to the support of the volunteer including room and board. Families are rarely accepted because overseas institutions are not equipped to receive them.

All applicants must be church members and are encouraged to seek the counsel of their pastor and their presbytery executive for sources of support for travel and/or monthly allowance before requesting aid.

Volunteers need maturity, stamina, resourcefulness, general skills in areas such as music, arts, crafts, recreation, leadership, maintenance, office work and specific skills as suggested in job descriptions which are available on request. A second language is requested at some projects. All projects expect willingness to accept disciplines of Christian community.

* (For 1989 USA project listings, see reverse side)

Overseas Educational Service

Opportunities in the Mission Volunteers program for Overseas Educational Service are focused in two programs: Teacher/Learner Projects and Sabbatical Year Service. Requirements of experience and training may vary considerably between the two. Education is also a major emphasis under the Mission Diaconate program.

Placement of teachers often requires at least six months from the time of application to the date of departure — often longer for sabbatical year service. Generally, the volunteer receives room, board, and sometimes a small allowance. Travel scholarships, if needed, should be requested at the time of application to the program. Orientation is required for all volunteers.

TEACHER/LEARNER PROJECTS - Church-related schools in countries such as Japan, Thailand and Egypt, annually request volunteer teachers for a two-year term.

QUALIFICATIONS:

Ages - In most cases, national requirements are 21-65

Requirements - BA or BS degree minimum. Teacher training and/or classroom experience strongly preferred.

Religion - A commitment to the Christian faith and a willingness to participate in the life of the host church.

Attitude - Openness to people, a willingness to learn and serve, and a commitment to a simple lifestyle.

Program - Teaching is the service provided. In addition, several projects offer opportunity to learn about the culture, politics, and religions of the country. Volunteers are often assisted with travel within the country, involvement in the church, and study of issues.

Deadlines - Applications for teaching opportunities need to be submitted no later than March of each year for late summer departures. Egypt and Japan (second semester) deadlines are in late May for the application with a late summer departure.

SABBATICAL YEAR SERVICES

Sabbatical Year Service is a limited dimension of this program area. Some overseas theological schools and colleges/universities are interested in receiving visiting lecturers on sabbatical from USA faculties. Assistance is provided in coordinating a variety of sabbatical year service opportunities, especially in the fields of theology, biblical studies, medicine, science and technical studies.

SPECIAL OPPORTUNITIES

As an expression of ecumenical relationships, Mission Volunteers cooperates by placing volunteers with Bachelor's degrees in three special programs in Europe:

Britain - "Time for God", a one year voluntary service program for young adults, provides opportunities for a few international participants in churches, service institutions, hostels related to Anglican, Baptist, Methodist and United Reformed Churches.

France - The Diaconal Year program of the Protestant Federation of France welcomes participants from the USA for a year of service beginning each September in social service institutions related to the Federation. Most appropriate for young adults 21-25 years of age. Must speak French.

Germany - Through its fraternal worker program, the Evangelical Church of West Berlin places well qualified young adults in parishes of that church, mostly to provide leadership in youth and children's work. Must speak German. Two year assignments.

INTERNATIONAL INVOLVEMENT EXPERIENCES

The PC(USA) offers a program of short-term structured learning experiences overseas. The program strives to increase global awareness and strengthen ties between the various parts of the one body of Christ. A variety of group travel experiences will be offered, including seminars and work camps in regions overseas—Africa, Asia, Europe, Latin America and the Middle East. Each project will include a significant component of encounter with the indigenous Christian community and the issues that affect their lives. As an integral part of the learning process, each travel experience will include specific study materials and an orientation session before departure, and conclude with a group evaluation and debriefing session. Opportunities for group and individual follow-up will be encouraged. Some projects will be for youth and young adults; others will be for all ages. Detailed packets of information and applications for 1989 spring and summer events are available.

Overseas Health Service

The Presbyterian Church (USA) has long emphasized health care as part of its world mission. That emphasis led to the development of many hospitals in Asia, Africa and Latin America. Today those hospitals/health programs are administered and staffed largely by national personnel, a result, in part, of a mission policy that has emphasized leadership development. They are part of the ministry of overseas churches with which the PC (USA) maintains partner relations. At the same time, hospitals are also guided by government standards and, in some countries, are part of, or at least relate to, government planning for health care. Through visa policies, governments also control expatriated participation in health care.

These hospitals/programs establish their own policies on and arrangements for volunteers who may provide short terms of service. Mission Volunteers seeks to determine regularly what their specific needs are. Two key motivating factors impact their quest for volunteers which affects each situation differently: 1) a chance to upgrade knowledge and skills of their staff; and, 2) a desire to maintain Christian fellowship and witness.

Who is needed? Given the circumstances of these health programs, there is often a focus on volunteers who have specific professional health training and status; however, some needs require engineers, computer experts or librarians. Mission Volunteers has a special interest in helping persons with public health training and experience find roles in primary health care.

How long do volunteers serve? Physicians with specific specialties may be welcomed for brief periods that may fit into vacation plans, and may need a local language, but increasingly, hospitals emphasize the need for longer terms of three to six months.

What does it cost? No program can cover travel costs, so individual arrangements often need to be made for this growing expense. While we prefer that hospitals provide room and board, not all are able to do so. Often a volunteer's church assists with expenses.

What and where are the opportunities? Opportunities are primarily focused in Asia, Africa and the Middle East with a few in Latin America. More detailed information appears in the MV Health Service Opportunity Packet.

How do I apply? The normal procedure is to file an Application for Service with the Mission Volunteers office (a special form is available for health service volunteers). VM contacts references and then shares the application with a particular hospital/program guided by the volunteer's preferences. Acceptance is determined by the project authorities. Direct correspondence with the project is welcomed after notification of acceptance. MV also maintains a health services skills bank of applicants who would like to be contacted as specialized needs are identified.

Mission Diaconate

Mission Diaconate Service is the most rapidly growing program of short term overseas service. Appointed by the Global Mission Ministry Unit board for two or three year terms, diaconal workers often serve in special areas of need and concern of overseas churches.

Diaconal workers are persons with specialized skills — many have master's degrees or professional experience and fluency in a second language; most are in the 25-40 age range. But just as important as professional skills are personal styles and commitments; openness of mind, flexibility of spirit, consciousness of community and sensitivity to human need. MD requires a willingness to live a simple lifestyle with less.

Orientation, transportation, a subsistence wage, insurance, social security, and a terminal grant are included in the support package for subsistence workers. Like MV, at least six months is needed from the time of application to departure.

Although requests are frequently changing, illustrations of several kinds of work are found in these recurring requests:

Teachers of English, Science, Math, and Religious Knowledge in Africa.

Teachers with experience and/or Master's degrees are needed to teach in schools where supplies are scarce and classes often are 50-70 students in size. In Africa, many countries coordinate between church and government to maintain schools in the context of development and in some cases turbulent social change.

Researchers, Writers, and Editors in Human Rights Work.

Providing editors and researchers for international ecumenical church journals and institutes monitoring specific human rights concerns such as the concern for Korea. Master's level skills in social research or journalism as well as an appropriate second language is needed.

Ph.D.'s in areas of Theological Education.

Recent Ph.D. graduates in fields such as Church History and New Testament are needed to teach in Third World seminaries where international faculties struggle with issues of indigenization and ecumenics.

Specialists for Health Ministry Programs.

Doctors and nursing instructors are needed in Egypt, Kenya, and Zaire. Specialists are also needed in areas of community organization for Health and Development, Health Care Facilities/Equipment, and that of a Solar or Water Engineer.

Seminary Interns

Special service learning opportunities annually for 2 PC (USA) seminary students in special 1-year internships with Third World churches and ecumenical agencies. Priority given to racial/ethnic applicants.



ECUMENICAL PROGRAMS

A CHRISTIAN MINISTRY IN THE NATIONAL PARKS seeks seminary and college students to work in National Parks June through August. Participants are assigned to secular jobs with salary, room and board; 20 years of age and older are given preference. Contact Warren W. Ost, Director, 222 1/2 East 49th Street, New York, NY 10017.

BREAD FOR THE WORLD is an organization seeking public policy changes on Hunger-related issues. Persons interested in serving as interns may apply directly to them. Financial assistance for Presbyterians may be available through MV. Contact Romberto Torrella, 6411 Chillum Place NW, Washington, DC 20012.

SHORT-TERM WORK CAMPS

Short-term work camps provide unique opportunities for groups of young people and/or adults to help meet identified needs of various congregations, church-related agencies, or governing body-sponsored programs. The Mission Volunteers office gathers information about project sites and provides names and addresses for further follow-through by interested groups. That list and *A Guide for Planning Short Term Work Camps* are available from the Mission Volunteers office in November.

YOUTH IN MISSION - 3-month Youth In Mission summer opportunities are available for young people (18-33) wishing to participate in global ministries.

WORKCAMP/STUDY SEMINAR Summer opportunities are available in Mexico, Haiti, and the Caribbean. A ministry for intergenerational groups (8-15 people) in contextual theology and cultural awareness.

For further information contact:

Education and Congregational Nurture Unit
Presbyterian Church (USA)
100 Witherspoon Street
Louisville, KY 40202-1396
Janice Nessibou (502) 569-5498

General Assembly Internships

Six salaried, one-year internships are designed for young adults, 20-25 years of age, to serve and to learn in the General Assembly arena. Job descriptions for each internship, outlined below, are available upon request. AA/EEO is practiced. Deadline 2/15/89. Notification after 4/1/89. Due to restructuring of PC (USA) some positions may not be filled.

Council on Women and the Church (COWAC) Intern: 1 person to work on the eradication of sexism at all levels of the church, through providing resources to task forces on women and COWAC committees. Concern for women's issues and freedom to travel are needed.

United Nations Intern: 1 person to assist Program Agency work in Peace and International Affairs, involves monitoring specific issues in the United Nations Assembly proceedings and related organs, written and oral interpretations, and participation in the network of Non-Governmental Organizations. International relations and economic background preferred. Overseas experience helpful.

Global Mission Intern: 2 persons, former MVs, to assist in recruitment (desire to travel), program development, interpretation and administration. Public relations, communication skills a necessity.

Youth/Young Adult Program Interns: 2 persons to provide youth and young adult perspective to the continuing planning and resourcing of youth and young adult ministry. Responsibility will focus on relating to Peacemaking and Racial/Ethnic staff teams, maintaining communication network, planning for General Assembly Youth Advisory Delegates, planning and implementation of national and regional events.

Presbyterian Men Program Intern: 1 person to expand the resourcing services of Presbyterian Men into presbytery and synod men's council/task forces, especially in regard to recruitment of young men into active church life. Public relations and communication skills a necessity. Travel up to sixty percent of the time. Administrative skills required.

Mission Volunteers

Mission Volunteers (MV) is a program of People In Mission, Global Mission Ministries Unit that offers opportunities for people, young and old, who are willing to contribute service and live a simple lifestyle while helping to meet needs locally and globally.

MV focuses on full-time voluntary service needs/opportunities that are defined by requesting churches, institutions, agencies. Consequently, it cannot place everyone who desires to get involved in the church's ministry and mission. MV does try to supply enough information to help projects and people make mutually acceptable and helpful choices about each other.

All volunteers must be church members, though not necessarily of the Presbyterian Church (USA).

THE APPLICATION PROCEDURE

- Secure application forms from Mission Recruitment Office
- Apply early. Some projects take several months to act on applications after they are processed, and securing references often takes at least two to three weeks.
- The project makes the final decision whether or not to invite the volunteer.
- You will receive notification of acceptance from the project and/or the MV office.
- Additional steps, including medical clearance, work permits, securing visas, making travel arrangements and orientation, can add considerable delay to some overseas placements.

FOR FULL INFORMATION on projects of interest to you, for supplementary lists mentioned in this bulletin, for general information, and for application forms, see Order Blank.

UPDATE - MV office publishes a supplementary bulletin called Update. It includes new listings that appeared too late to be included in the annual bulletin.

NEWSLETTER - MV office publishes a newsletter which includes items of interest about MVs.

Mission Volunteers Staff



Morrisine Flenbaugh Smith
Associate
Missionary Recruitment



Rheta Jenkins
Secretary
Missionary Recruitment



Linda Crawford
Associate
Mission Volunteers/USA



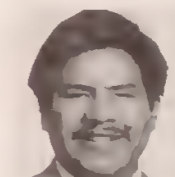
Carol Lurty
Administrative Assistant
Mission Volunteers/USA



R. Michael Stuart
Associate
Mission Volunteers/Overseas



M. Muriel Burrows
Administrative Assistant
Mission Volunteers/Overseas



Calvin Holder
Program Assistant/USA



Vivian Hare
Program Assistant/Overseas

Mission Volunteers - USA

KEY TO ABBREVIATIONS
SS Summer Service
ST Short-Term Service
LT Long-Term Service
AC Project participates in Academic Credit for Voluntary Service
PJ Peace and Justice Ministries
RE Racial/Ethnic Ministries
DM Diversified Ministries

SYLVANIA, ALABAMA PJ AC SS
Upper Sand Mountain Parish - 1 person or couple needed who is knowledgeable in basic home construction and repair. Carpentry skills are required and plumbing or wiring skills would be beneficial.

BARROW, ALASKA RE LT
Uteagvik Presbyterian Church - seeks youth worker with church experience to assist pastor in recruitment and training of volunteers to work with youth in growing youth population.

FAIRBANKS, ALASKA RE DM SS
The Bert Bingle Memorial Camp - 7 persons needed: 1 manager, 1 head cook, 1 assistant cook, 1 lifeguard - dishwasher, 1 maintenance person, 2 program assistants.

HAINES, ALASKA PJ RE DM LT
Haines Presbyterian Church - needs Youth Director to contribute and develop a Christian ministry with youth. Skills in music and Bible Studies.

HAINES, ALASKA PJ RF DM LT
Rainbow Glacier Camp - needs 1 couple and 5 individuals to fill the following positions: 1 maintenance person to be responsible for care/repair of buildings/property, 1 cook to prepare meals for staff and campers for a 6-8 week period, 1 person to assist cook and 4 persons to work as counselors with youth.

HAINES, ALASKA DM LT
The Sheldon Museum and Cultural Center - 1 person needed to assist pastor of Haines Presbyterian Church with secretarial work and with developing ideas for programs in museum education and research. Responsibilities include tours, organizing book collections, acting as museum aide, developing educational programs and promoting the area's history.

JUNEAU, ALASKA RE DM AC SS
Southeast Alaska Volunteers In Mission Program (SEAVIMS) - 8 men, 8 women, ages 19-35, working in teams of 2-4 travel throughout Southeast Alaska to teach Vacation Bible Schools, counsel at rustic Christian camp, and find other self-motivated ways to minister to Native villages, tourist towns, logging camps, and cannery camps—a highly rewarding growth experience. Anna Jackman Ministry.

NOME, ALASKA RE DM LT
Nome Presbyterian Church - 1 person to work in community where English is second language of elderly. Responsibilities: include visitation, youth work, church school and worship leadership.

NORTH POLE, ALASKA RE DM AC LT
New Hope Methodist Presbyterian Church - 1 person needed to witness and share the faith while fully participating in the daily routine of church administration.

SITKA, ALASKA RE DM LT
First Presbyterian Church - Christian Education coordinator needed to expand a recently revitalized local church program of education and visitation. Must be willing to work with all ages from 2 years to senior citizens and be sensitive to multi-racial, multi-ethnic congregation.

SITKA, ALASKA RE DM AC SS/LT
Sheldon Jackson College - 30-40 persons to work fulltime supplementing staff as library helpers, secretaries, kitchen helpers, administrative personnel, electricians, carpenters, general maintenance workers, gardeners, housekeeping aides, printers. Appointment periods to choose from: Summer - May 20 to August 15, Long Term - August 20 to May 15. Please indicate choice of summer or long-term on application with corresponding dates. Minimum stay is 3 months. Decisions for both summer and long-term appointments are made during February each year.

SITKA, ALASKA DM SS
Sitka Youth Hostel - singles or couple needed to provide oversight to the operation of hostel for travelers.

GANADO, ARIZONA RE LT
Gando Mission - 1 person to serve as general administrative assistant for multiple outreach program in Navajo community.

KAYENTA, ARIZONA PJ RE DM LT
Presbyterian Mission - a couple to provide general help (maintenance, emergency service, sewing/cooking classes, calling) in three Navajo communities.

PHOENIX, ARIZONA PJ RE LT
Ministries with Refugees At Risk - provides assistance to Central American refugees and the Sanctuary Movement in the Southwestern USA. Positions include: social service coordinators, legal aid workers, refugee assistance workers, Sanctuary coordinators, etc. People with a wide variety of skills are needed to fill a variety of positions in California, Arizona and Texas.

PHOENIX, ARIZONA PJ LT
Presbyterian Service Agency Residents - needs Program Assistant or social worker to assist chronic mentally ill living in apartments to remain in the community by helping with daily living skills, shopping/supportive services, monitoring medication, participate in psychiatric staffings on a weekly basis.

PHOENIX, ARIZONA PJ RE LT
St. Mary's Food Bank - 9 persons needed in the following positions: Senior Coordinator for Host Recruiting and Development, Coordinator of Distribution and Community Services, Coordinator of Satellite Distribution and Host Recruiting and Development, Office Manager, Project Coordinator (2 needed), Coordinator of Shelter, Breakfast and Building Maintenance, Assistant Warehouse Manager, Dispatcher.

TEMPE, ARIZONA RE DM LT
Charles Cook Theological School - needs 1 Conference Center Chef/Cook, 4 conference center staff persons, and 1 Director of Continuing Education.

TUBA CITY, ARIZONA DM LT
First Presbyterian Church of Tuba City - 1 person or couple for care of four buildings and grounds. Skills needed: basic knowledge of electricity, plumbing, heating, carpentry. Willingness to work with others and ability to encourage others to participate.

TUCSON, ARIZONA PJ RE LT
House of Neighborly Service - Long and short-term staff needed for innovative youth development programs, office manager, and maintenance.

ANAHEIM, CALIFORNIA DM ST/LT
Presbytery of Los Runchos - seeks experienced pastor or teacher in Evangelism and Church Growth to work with Presbytery and churches.

DELANO, CALIFORNIA PJ RE AC LT
National Farm Worker Ministry - 5 persons, college age and up to work in farm worker community. Training provided. Specific needs are for: Community Organizers (Spanish desirable, not required); and 1 person to work in the Ministry Among Pesticide Victims (Spanish necessary).

OCCIDENTAL, CALIFORNIA PJ DM SS/LT
Westminster Woods Camps and Conference Center - 5 men, 5 women needed to fill the following positions: Paramedics/Nurses; Volunteer Cabin Counselors. Long-term positions for which any number of persons may be utilized are: carpenters, plumbers, electricians, mechanics, office help for special mailings, answering phones, filing, etc., kitchen workers as cooks, dishwashers, etc.

PACIFIC PALISADES, CALIFORNIA DM ST/LT
Presbyterian Conference Facility - LT positions are for 1 person with strong office and public relations skills, 2 persons to assist staff with cooking, maintenance, carpentry, recreational, groundskeeping and lifeguarding. ST assignments include: 1 person with theological training (ordained to the ministry, preferred) to do Bible Study and counseling, plus 5 persons who have completed freshman year of college with aptitude for carpentry, plumbing, electrical work, cooking and housekeeping.

PASADENA, CALIFORNIA DM LT
Monte Vista Grove Homes - seeks one married couple to assist elderly in correspondence, visitation, transportation, minor repairs. Also assist with recreation program and worship. Spanish helpful.

SAN FRANCISCO, CALIFORNIA PJ RE DM SS
Donaldina Cameron House - 16 men and women (17-22 years old) to serve as live-in day camp counselors with 50 other youth volunteers and 300 children in multi-service community center for Chinese-Americans and immigrants. Skills in sports, arts & crafts, nature study, camping desirable. One week training is provided. One assistant teacher/group leader for summer school for immigrant refugees or newcomers. Cost is \$250.00 for room and board. Request scholarship help if needed.

SAN FRANCISCO, CALIFORNIA PJ RE LT
SEQUOIA: The Church at Work - needs 1-2 persons to help run ecumenical communications program as editorial and production assistant.

SAN JOSE, CALIFORNIA PJ RE DM LT
San Jose Urban Ministry - seeks one person as assistant to director of broad-based ecumenical ministry for the homeless. Responsibilities include registry of guests; transport of food and supplies; and cleanup/maintenance of two downtown shelters.

SAN YSIDRO, CALIFORNIA PJ RE LT
Orphanage Casa del Esperanza - seeks 1 person for teacher position for children ages 2-5. Must be able to speak Spanish. Teacher will work with abandoned and traumatized children.

WATSONVILLE, CALIFORNIA DM AC ST/LT
Coralitos Conference Center - LT is seeking Office Manager. ST needs are 4 lead counselors who have completed one year of college, 21 years of age or older is preferred, with skills in program organization, program execution, leadership and supervision. Music and guitar skills or craft skills are necessary. Should have an understanding and sensitivity to people and the environment.

WEST OAKLAND, CALIFORNIA PJ DM LT
Jubilee West, Inc. - seeks one person or couple, retirees preferred, for administrative and program work in ecumenical organization developing holistic approach to revitalization of low income area of Oakland.

ALLENSPARK, COLORADO DM AC SS/LT
Presbyterian Highlands Camp - (SS) seeks 2 men, 2 women as program assistants and camp counselors to serve as Christian examples for campers and to support the implementation of the total camping program. Responsible for the safety of small group of campers, lead activities, live in cabin with campers. (LT) 1 person to assist in the ongoing operation of the camp in three specific areas: office, maintenance and program development.

GRAND LAKE, COLORADO PJ DM SS
Shadowcliff Life Center - needs 3 women, 2 men (4 college age + 1 older adult) to live together in intentional working community; involved experiential ministry with students, visitors, residents of Grand Lake/Rocky Mountain Park summer resort. Work includes operation of retreat and conference center/youthhostel, maintenance, cooking. Older adult is needed as desk manager.

WILMINGTON, DELAWARE PJ AC SS/LT
Peabody Retirement Community - 2 men, 2 women to serve as Community Services Workers for non-profit religious mission ministering to families, young men and women who are lost or homeless. 1 person needed as Food Services Worker.

WASHINGTON, DC PJ LT
Church of the Brethren Food Program - assistant needed to help select, purchase, prepare and serve food in a community lunch program for 175 homeless guests daily. Will also oversee other volunteer groups.

WASHINGTON, DC PJ LT
Elizabeth House - one woman or couple needed as manager of short-term residence for homeless, pregnant women. Will provide supervision of residents, monitor housekeeping, serve as liaison between residents and support group. Spanish is essential.

WASHINGTON, DC PJ LT
Shelter for the Homeless, Inc. - Employment Opportunity Development Worker will assist the startup of small business for the homeless, conduct feasibility studies, obtain permits, raise funds, solicit donations, etc. Should be bilingual English/Spanish.

DUNEDIN, FLORIDA PJ ST/LT
Milwaukee Grove House - Opportunity for ministry with older adults; 1 or 2 persons or couple needed to help house for 6 limited income, still functional, over-85 adults. Responsibilities: meals, ordinary household chores, recreational activities, presence, spiritual friend. Neighborhood outreach - involvement with local churches and community organizations.

GLENWOOD, FLORIDA PJ DM AC SS/ST
Duvall Home for Retarded Children - 2 college age persons needed for Recreation/Leisure time Assistant, Special Education Teacher's Aide, Direct Care Worker, Office Worker, Physical Therapist's Aide.

AMERICUS, GEORGIA PJ RE AC ST/LT
Habitat for Humanity - seeks MV to serve as volunteers at its international headquarters for its ecumenical Christian based housing and community program. Variety of positions available, e.g., bookkeeping, filing, fundraising, publicity, masonry, plumbing, secretarial, construction.

AMERICUS, GEORGIA PJ LT
Koinonia Partners - seeks 1 MV or couple to assist in the following duties: shipping pecan orders, wood splitting, pruning grapes, gardening, tutoring, etc.

ATLANTA, GEORGIA PJ LT
The Central Health Clinic - seeks Health Educator with special interest in helping lower income patients to understand disease process. Emphasis on prevention, diet, lifestyle changes. Opportunity to make an impact on the health of people who "fall through the cracks" of the medical system.

ATLANTA, GEORGIA DM LT
The Interdenominational Theological Center - seeks professionally trained archivist with experience. Person needed to be flexible in work environment. A working knowledge of German and biblical language is helpful, but not necessary.

ATLANTA, GEORGIA PJ AC ST/LT
The Open Door Community - seeks MV to assist in project activities such as Prison Ministry; provide shelter for the homeless; and community outreach. Greater need during winter months.

COMER, GEORGIA PJ RE AC ST/LT
Jubilee Partners - (LT) 10-15 persons to teach English as second language, child care, gardening, office, construction, nurse or doctor, lawyer, auto mechanic. Aiding Central American refugees; (ST) 2-3 volunteers needed to interview Central American refugees; Sept.-Dec. and Jan.-May. Spanish helpful but not required for all positions.

DECATUR, GEORGIA PJ LT
SEEDS Magazine - needs Readership Service person to respond to reader's requests, maintain computerized subscriber list and provide office support for this hunger issues magazine. Computer and office skills are helpful.

ELK CITY, IDAHO DM ST
Elk City Community Church - seeks one person or couple to serve as student pastor or residential spiritual counselor. Volunteer would lead adult Bible study, make input to women's study group, Sunday preaching and make home visits.

ASSUMPTION, ILLINOIS DM LT
Kemmerer Village - 3 persons to serve in supervising and counseling adolescent youth.

OREGON, ILLINOIS DM SS
Stronghold Ministries - needs 8-10 persons as counselors, maintenance workers, kitchen helpers and housekeepers. Counselors will work serving children and adults in a wilderness campsite/retreat center and will be trained in their job responsibilities.

INDIANAPOLIS, INDIANA PJ LT
Near Eastside Multi-Service Center, Inc. - Tutor, senior citizens center program assistant and adult day care program activity assistant, community organizer, assistant to administration, typist/clerical worker, and special project coordinator for community-based, not-for-profit social service agency.

NEW CASTLE, INDIANA RE DM LT
Westminster Community Center - seeks two persons to serve as Program Aide/Social Services Provider. Westminster Community Center is a church-related social services agency specializing in youth services. The volunteer should be willing to provide love and kindness to low-income youth.

NORTH MANCHESTER, INDIANA DM ST/LT
Peabody Retirement Community - 2 staff nurses to serve in 150-bed Health Care Center.

ROCHESTER, INDIANA DM LT
Geneva Center - seeks two persons, single or married to assist with maintenance and upkeep of ecumenical center with some work in office and public relations.

DUBUQUE, IOWA PJ AC ST
Hilcrest Family Services - seeks 3 persons (college students interested in counseling/social work field) to work with emotionally disturbed adolescents between the ages of 12-17 in Presbyterian/Methodist related facility.

MONTICELLO, IOWA PJ DM AC ST/LT
Camp Courageous - welcomes men and women with a desire to serve persons with varied physical and mental disabilities. We serve all special populations including head injured, autistic, learning disabled, visual/hearing impaired, etc. Counselors direct care of campers and leading activities such as canoeing, rock climbing, rappelling, tripping, caving, etc. Maintenance interest of skill in such areas as plumbing, electricity, carpentry, mechanics, etc.

SPRINGVILLE, IOWA DM AC SS
Springville Area Neighborhood Service - a program assistant in a small community service agency serving any unemployed persons and senior citizens.

HUTCHINSON, KANSAS PJ LT
Hutchinson Heights - needs two persons to work as attendants with developmentally disabled or people with any other sort of handicap.

BEVERLY, KENTUCKY PJ DM LT
Red Bird Mission - Certified teachers needed for music, industrial arts, physical education, social studies (secondary), math (elementary), science (elementary), special education, speech therapy, teacher of gifted, guidance counselor. "Parents" needed for girls' and boys' dormitories.

BOONEVILLE, KENTUCKY DM LT
Morris Fork Crafts, Inc. - couple + 2-3 additional persons to manage/operate small self-help craft cooperative in Appalachia. Requires adaptability, relating to different backgrounds, much driving, good physical condition. Two year commitment beginning Winter/Spring 1989.

BUCKHORN, KENTUCKY DM AC LT
Presbyterian Child Welfare Agency/Buckhorn Children's Center - seeks 1 child development aide to work with preschoolers; and a Big Sister to live in group home and teach skills of independent living. Also needed in 1 therapeutic recreation aide to work with adolescents in the Residential Treatment Program.

CATLETTSBURG, KENTUCKY DM LT
Ashland Area Presbyterian Ministries - Service worker needed to supervise special service programs to determine unmet needs. Will coordinate and consolidate the ministry efforts of four area Presbyterian Churches to address identified areas.

HARLAN, KENTUCKY PJ DM LT
Christian Outreach with Appalachian People - needs one person for Construction Supervisor with experience in both remodeling and new construction preferred. Work independently.

HAZARD, KENTUCKY PJ LT
Perry County Community Hospice - seeks one nurse to assist in formulating and implementing patient/family care plans with H-PCCH Patient Care Team. Act as liaison between patients and H-PCCH. Also need one person as Executive Director who will be responsible for the administration of all policies established by the Board of Directors.

INEZ, KENTUCKY PJ LT
Christian Appalachian Homes - married couple needed as maintenance supervisor and used clothing store worker at a mission facility for homeless, abused women and children. A willingness to share one's faith with residents is expected.

LEXINGTON, KENTUCKY PJ LT
Appalachian Regional Health Care - 10 men, 10 women for doctors, nurses, dietitians and other health-related positions in Appalachian health care facilities.

LEXINGTON, KENTUCKY PJ DM AC SS
Life Adventure Camp - 12 summer counselors, 1 food director and 1 health supervisor to serve as staff in an intense, wilderness camp setting for children with emotional and behavior problems. Completion of one year college or one year related work experience. Summer seasonal employment only.

EDGEWOOD, MARYLAND PJ DM LT
Forward Step, Inc. - needs one woman to work with counseling staff to complete pre-admission interviews, psychosocial histories, treatment planning, evaluation of residents' progress, facilitation of problem solving, and discharge planning in a refuge and counseling center serving women in need. The volunteer must hold a degree from an accredited Junior College or University in Human Services field and have at least one year experience working with women in crisis.

NEW WINDSOR, MARYLAND DM LT
Heifer Project International - needs 1 person to serve as full-time secretary to help carry out promotion and program.

MONTEREY, MASSACHUSETTS PJ ST/LT
Gould Farm - seeks up to 2 men and 2 women to assist in the care of individuals who are undergoing rehabilitation from mental illness. Includes participation in community living, meals and recreation.

RUTLAND, MASSACHUSETTS DM LT
Heifer Project International - seeks mailroom supervisor, receptionist/secretary, volunteer for support services to assist office volunteers, agricultural worker, associate for volunteer activities to oversee records and recruit volunteers, administrative assistant to oversee records and office staff supervision, agricultural secretary for correspondence and computer, associate for development of education to develop PR materials on program, and host couple to assist tour groups and help with some maintenance.

GOWEN, MICHIGAN DM SS
Camp Greenwood - 8 men, 8 women needed for presbytery camp counselors, waterfront staff, cook and kitchen helpers, maintenance, health services and office work.

COOK STATION, MISSOURI DM SS
Moundridge Camp - RN or LPN, office, maintenance help and program staff for waterfront, trails, counseling needed for presbytery camp in Central Ozarks.

FARMINGTON, MISSOURI PJ AC LT
Farmington Presbyterian Manor - activities associates to help meet social, psychological and leisure needs of elderly residents; also maintenance and construction assistants to help in the development and upkeep of expanded facility.

FARMINGTON, MISSOURI DM AC LT
Presbyterian Children's Service, Inc. - Maintenance, recreation worker, special function tutor and/or classroom teacher, secretary/bookkeeper, regional development representative to share Christian nurture for children 10-17.

FULTON, MISSOURI DM SS
Ecumenical Ministries of Callaway County - 4-5 young adults to develop/present a day camp ministry involving puppetry, crafts, music, etc., working with local youth.

KANSAS CITY, MISSOURI RE PJ LT
N.E.W.S. Home for Battered Women - needs one child advocate worker to identify abused children and plan program for them addressing their special needs, participating in Hotline. Crisis Counseling training and on-the-job training.

MALDEN, MISSOURI PJ RE AC LT
Migrant Farmworkers Project - 1 coordinator is needed for a community of approximately 400-500 migrant farmworkers. Responsibilities include outreach to the farmworkers to inform them of services available, advocacy and establishing contracts for the workers among farm owners and law enforcement officials.

ST. JOSEPH, MISSOURI DM AC SS/LT
Interfaith Community Services - a person to develop youth residential treatment after-care program and assist operation of elderly nutrition sites.

DANBURY, NEW HAMPSHIRE DM AC SS/LT
Camp Wilnot - person skilled in general maintenance to act as supervisor for remodeling camp cabins and other facilities. Also seeking one nurse, registered in New Hampshire who will relate to doctors, hospital and pharmacy 15 miles away. One experienced person as Head Cook (SS) to serve balanced meals to 40-100 persons and be in charge of ordering, inventorying and reporting. Also need Office Manager.

PLAINFIELD, NEW JERSEY PJ ST
Program for the Self Development of People - needs one person to serve as consultant. Assist Presbytery's committee in identifying, counseling with, and funding persons in communities of need.

ABIQUIJU, NEW MEXICO DM SS
Ghost Ranch - Presbyterian adult study center needs 1 youth minister (or couple to share) to coordinate activities for 12-30 teenagers weekly; 34 mature post-sophomore college students for ranch staff work/study program. Students receive room, board, travel subsidy, stipend of \$125/month, learning opportunities. Preference given to those who can serve June 1 to August 31. Deadline: April 1, 1989.

ALBUQUERQUE, NEW MEXICO PJ RE DM SS
Martinez House of Neighborly Service - One bilingual person to coordinate summer recreation for youth 6-16 in Hispanic community and one bilingual person to serve as social service aide for senior citizens program.

ALBUQUERQUE, NEW MEXICO RE DM LT
Menaul School - needs include assistants in school office, admissions, media center, health center, development office, historical library (director), academic support/tutors, and maintenance, for PC (USA) multicultural boarding/day school.

CHIMAYO, NEW MEXICO RE AC LT
John Hyson Educational Center - 1 person to teach children 6-10 years old in bilingual/bicultural school. Teacher training and Spanish are helpful.

CUBA, NEW MEXICO PJ RE ST/LT
Checkerboard Area Health System - has an ongoing need for doctors, nurses and dentists to work with Native American, Hispanic and Anglo community for at least six months. Needed: 1 person with skills in midwifery, emergency nursing and visiting nurse services.

FARMINGTON, NEW MEXICO PJ RE LT
Farmington Community Health Center - needs 1-3 people for service as doctors, nurses, dentists, physicians' assistants at Community Health Center/Indian Health Services Center/Veterans Administration Services, serve Navajo, Anglo, and Hispanic populations. Also seeking person with skills in visiting nurse services.

LAS VEGAS, NEW MEXICO PJ RE LT
The Samaritan House - 2 persons/1 couple to manage emergency housing facility in Presbyterian Mission Church. Maintenance and cooking skills, helpful.

BUFFALO, NEW YORK DM LT
Central Presbyterian Church - 1 person for Coordinator of Volunteer Programs.

NEW YORK, NEW YORK PJ LT
Broadway Presbyterian Church Community Lunch Program - 1 person to serve as principal member of management team to coordinate lunch program. Also, 1 college graduate to work with college students in student ministry for 2 years.

NEW YORK, NEW YORK PJ DM LT
Jan Hus Presbyterian Church - needs people to help with peacemaking program. Will work with interfaith peace and justice coalition. Also includes some work with pastor to strengthen congregational life and mission of the church.

SALEM, NEW YORK DM LT
Camp Hebron - seeks one person or married couple to serve as Camp Caretaker. Responsible to youth, young adults to Hebron Camp Committee of Albany Presbytery.

SARANAC LAKE, NEW YORK DM AC ST/LT
Land's End - conference center needs (LT) secretary/hostess and maintenance; (ST) maintenance, kitchen help, lifeguarding, and housekeeping.

STONY POINT, NEW YORK PJ DM SS/LT
Stony Point Center - national conference center for education and mission offers: (SS) 8-week summer service for college students/high school graduates; manual labor and assistance in Center operations; study issues include justice, ecology, global concerns, international students encouraged to apply. (LT) one year service interns to assist staff in carrying out all aspects of the Center's operation and program; commitment to international community and global issues is desirable.

WAPPINGERS, NEW YORK DM SS
First Presbyterian Church - 1 summer intern needed to work with the congregation and pastor to develop summer programs, worship/fellowship alternatives.

YONKERS, NEW YORK PJ SS
Yonkers Urban Ministry - assist in the neighborhood and community organization activities. Work with children and youth helping to organize a homesteading project to rehabilitate old buildings. Spanish helpful.

BANNER ELK, NORTH CAROLINA PJ DM LT
Grandfather Home for Children, Inc. - needs one person to act as assistant to public relations director at a home for neglected and abused children.

CHARLOTTE, NORTH CAROLINA RE DM SS
Seigle Avenue Presbyterian Church/Piedmont Courts - 1-4 persons needed as summer assistants in a low-income area of Charlotte. Needed for tutoring elementary school children, assist the summer staff with day camp and recreation, general maintenance, kitchen help, transportation and a teacher for an elementary class.

CULLOWHEE, NORTH CAROLINA DM LT
Presbyterian Campus Ministry at WCU (Western Carolina University) - seeks a woman in her 20's to early 30's who can work as Student Ministry Coordinator. Responsibilities include coordination of student activities, development of student leadership, supervision of care and use of student center, participation in student retreats.

SWANNOA, NORTH CAROLINA DM LT
Warren Wilson College - seeks persons to serve as: Fixed Asset Coordinator; Skilled maintenance/crafts person, Internal Auditor; Grants Accountant/Bookkeeper; and Admissions Assistant. Experience essential.

CINCINNATI, OHIO PJ AC LT
Free Store/Food Bank, Inc. - 1 or 2 persons to work with food bank staff in southern Ohio counties for emergency and supplemental food assistance.

COLUMBUS, OHIO PJ AC SS
Mobile Health Fair of Synod of the Covenant - seeks 5 students to assist summer program of health care advocacy in isolated rural areas and inner-city neighborhoods - medical, dental or dental hygiene, nursing, optometry; and a college student van driver/general assistant.

LANCASTER, OHIO DM SS
Geneva Hills Camp - 2 men/2 women or 2 couples to serve as summer staff in camping program-office skills, teaching, first aid, lifesaving, worship and hiking.

OKLAHOMA CITY, OKLAHOMA PJ LT
NSO Project Adopt - Assistant placement coordinator who has a Bachelors Degree in Social Work or related field. Project Adopt provides adoption service for families interested in adopting children considered hard to adopt.

OKLAHOMA CITY, OKLAHOMA PJ RE AC LT
Transcultural Family Counseling Center, Inc. - 1 person as counselor, translator and caseworker aide to meet needs of the immigrant and refugee community. Helpful to be bilingual in English and one of the Indo-Chinese languages or Spanish.

VIAN, OKLAHOMA DM SS
Dwight Presbyterian Camps and Conferences - seeks nurse, bus driver and summer maintenance person to provide health, transportation and maintenance needs to campers.

CORVALLIS, OREGON PJ DM LT
United Campus Ministry at Oregon State University - General assistant to campus ministries. Light maintenance, coordinate lunch program, interpretation and promotion.

NEWPORT, OREGON DM LT
First Presbyterian Church - needs 1 person to serve as Director of Youth Activities. Prefer single college age person who is committed to reaching young people. Experience in outdoor activities and willingness to make home visits is helpful.

PORTLAND, OREGON PJ DM AC LT
FISH Emergency Service, Inc. - 4 persons to share broad scope of duties in providing food and clothing to Portland's needy by interviewing, supervising local volunteers, doing inventory control and clerical work, meeting the public, ordering and picking up supplies and donations, some heavy lifting.

PORTLAND, OREGON PJ DM LT
Kendall Community Center, Inc. - needs 2 persons social service coordinator to interview/work with volunteers and work in Center filing food and clothing orders, keeping records and other clerical work, helping with transportation.

PORTLAND, OREGON PJ DM RE LT
Kenilworth Presbyterian Church - 1 minister of parish life.

PORTLAND, OREGON DM RE LT
Piedmont Presbyterian Church - seeks 1 development director for Outreach Ministry of church. Needs to be flexible, patient, outgoing, good listener, and eager to work as a team with the pastor and Session to uphold the church and community through faith in Jesus Christ.

ALLENTOWN, PENNSYLVANIA DM LT
Westminster Village - needs 20-30 persons with caring attitude to work with elderly and handicapped. Skills in crafts, music/other activities is helpful.

JENNERSTOWN, PENNSYLVANIA DM SS/LT
Fine Springs Camp - (SS) 8-week summer service for college students for counselors, waterfront manager, lifeguard, kitchen helpers, maintenance helpers. Small stipend and transportation assistance. Also cook for summer camp with menu preparation and food purchasing experience. (LT) Food Services Manager.

PHILADELPHIA, PENNSYLVANIA PJ LT
Borderlines Program - Coordinator will sensitise Presbyterians to issues faced by undocumented Central Americans in the U.S. Through speaking, educating, resourceing, networking, people will be encouraged toward a first-hand visitation experience with Central American refugees.

SLIPPERY ROCK, PENNSYLVANIA DM LT
Crestfield - 1 person to serve as program assistant helping site director/host youth and adult retreats, provide summer program leadership and assist director in a diversity of duties required.

HATO REY, PUERTO RICO RE DM LT
Evangelical Seminary of Puerto Rico - 1 couple/2 persons to work as assistants in development (skills in organization, experience in fundraising) and assistant librarian (skills in organization and experience in library work) who are members of Presbyterian Church (USA) & bilingual, English and Spanish.

NASHVILLE, TENNESSEE DM SS/LT
Monroe Harding Children's Home - (LT) houseparent, chaplain, and public relations worker; (ST and LT) 2 recreation workers, clerical workers.

NEWPORT, TENNESSEE DM AC SS
Sunset Gap Community Center - needs 2 college students for community involvement program in Smokey Mountains area. Plan and carry out social, educational, spiritual services to area families. Work with work camp groups from outside area.

ROBBINS, TENNESSEE PJ AC SS/LT
Habitat for Humanity - persons to assist in building new homes, repairing old ones, showing visitors Habitat, speaking to groups, administrative work and hosting work camps.

KINGSVILLE, TEXAS PJ RE DM LT
Presbyterian Pan American School - for multi-cultural high school serving primarily Mexican-Americans. High moral standards and Christian beliefs needed for domestic parents/ librarians, maintenance and activities assistants and teachers.

LIVINGSTON, TEXAS DM LT
Cho-Yeh Camp and Conference Center - 2 persons needed. Artist/craftsperson skilled in using natural materials; caretaker for livestock and equipment for model farm and gardens.

MCALLEN, TEXAS PJ SS/LT
Puentes de Cristo - 2 work camp assistants, 1 physical/Occupation Therapist, 1 translator, 1 nutritionist, 1 computer programmer, 2 Vocational Ed./Cooperative Development persons, 1 Marketing Assistant. Fluency in Spanish necessary.

MT. PLEASANT, UTAH PJ DM AC SS/LT
Wasatch Academy - 10-12 persons needed in general maintenance, assistant recreation leader, teachers (3) of English, Social Studies, and Math (secondary), tutors, assistant dining room/kitchen supervisor, publicity aide, driver-vehicle maintenance, coordinator of thrift shop, relief dorm parents, clerical.

MOSES LAKE, WASHINGTON PJ RE LT
Lombia Bavin Christian Ministry - needs bilingual houseparent. Spanish required for work with immigrants.

OKANOGAN, WASHINGTON DM LT
Okanogan Presbyterian Church - seeks educator/lay trainer to temporarily assist a small town church in developing and strengthening its ministry and program.

SPOKANE, WASHINGTON RE DM AC LT
Liberty Park Day Care - 1 person to serve as an outreach worker and day care aide in low income neighborhood.

WAPATO, WASHINGTON DM AC LT
The Campbell Farm - needs a person or couple for year-round help. Helpfull skills would include: gardening/cooking/farming/ Presbytery-owned working farm and study/retreat center.

HUTTONSVILLE, WEST VIRGINIA PJ SS
Triand Cooperative Ministries - Summer Coordinator will assist in the leadership responsibilities of the Work Camp Program which seeks to repair and construct housing for low-income and the elderly; to work with Vacation Church School and assist in the promotion and operation of the Day Camp operated by TCM for area children.

THE GLOBAL MISSION UNIT INVITES YOU TO GET INVOLVED

*"Perhaps my
greatest joy is
to say that I
am a GLOBAL
PRESBYTERIAN."*

**Thelma Adair
Global Mission
Ministry Unit
Committee**

Consider joining one of the
Presbyterian Church (U.S.A.)
People In Mission programs.

- Mission Co-Worker
- Mission Diaconate
- Mission Volunteer:
International
- Mission Volunteer: U.S.A.

For additional information and for
application forms, please write or call

The Rev Morrisine Flenbaugh Smith
Associate for Missionary Recruitment
Global Mission Ministry Unit
Presbyterian Church (U.S.A.)
100 Witherspoon Street, Room 3420
Louisville, KY 40202
(502) 569-5300



DMS -244-89-003

BECOME INVOLVED IN...

MISSION ^{IN} CHRIST'S WAY



Mission Co-Worker



Mission Volunteer



Mission Diaconate

PiM
PEOPLE IN MISSION

Global Mission Ministry Unit
Presbyterian Church (U.S.A.)

LIFE **AS** A MISSION CO-WORKER... IS IT FOR YOU?



"Those who have given of themselves in long term service have been used by God in a very special way."

**Clifton Kirkpatrick
Director, Global
Mission Ministry
Unit.**

The Presbyterian Church (U.S.A.) shares with partners in nearly 80 countries in the great mission of Christ's Church. We respond to the invitation of our partners to be a part of Christ's work in their country.

Our partner churches invite Mission co-workers to participate in their witness through evangelism, education, peace and justice issues, health ministries and other specialized projects. In response the Global Mission Ministry Unit appoints co-workers and provides them with support and oversight.

Mission co-workers respond by committing themselves to long term service with our partner churches. They share the gospel in word and deed by dedicating a major portion of their lives to the exciting reality of the global church.

Specialized tasks that may not require long term commitment may be filled by Mission Specialists. ■

The Global Mission Unit is actively seeking at least 200 people to join us as new mission co-workers.

STEPS TO BECOMING A PERSON **IN** MISSION

Presbyterians understand that God calls persons to service in ways that are both personal and corporate.

The feeling of a "call" may emerge from one's spiritual life and is an important aspect of a desire to serve in mission. Bible study, prayer, discussion with informed persons and careful listening all work together to bring a person to the point of seeking God's will for one's life and actual application for service.

Affirmation by the Church of a person's calling to global mission is a second element. The Global Mission Unit must be satisfied that a person has the needed qualifications. It then nominates the applicant to leaders of overseas partner churches. If they affirm the qualifications, the Global Mission Unit proceeds toward an appointment which is a three-way agreement—with the Unit, the applicant and the overseas partner.

An invitation by the partner church overseas or a church-related agency in the U.S.A. is an inseparable part of a call to mission. The requesting agencies have the responsibility of oversight within their jurisdiction. Individuals are appointed only to those positions where they have been requested and approved by partner churches. ■



**"God made from one every nation of people to live on all the face of the earth... that they should seek God."
Acts 17:26, 27**

PEOPLE **IN** MISSION STAND WITH CHRISTIANS WHOSE FAITH LEADS TO PEACE AND JUSTICE



"How beautiful upon the mountains are the feet of that one who brings good tidings, who publishes peace." Is. 52:7

Some of Our Mission Co-Workers Say:

It is a privilege to be in fellowship with people who are willing to risk almost all that they have for the cause of the gospel and for justice

God has chosen the poor throughout history and calls us to be with them to overcome the conditions that create poverty

The poor cry out for peace and justice in almost every part of today's world. Mission opens our eyes to the earth as a global village, where what happens in one place affects the whole.

Part of what we do is to bring an awareness of the need for change to our own churches so that our policies support peace and justice around the world ■

Good news is for the poor and for our own renewal and faithfulness.

TWO AREAS **OF** SHORT TERM SERVICE ARE DEFINED



"You shall be my witnesses . . . throughout the earth." Acts 1:8



"We, though many, are one body in Christ, and individually members of one another. Having gifts that differ according to the grace given to us, let us use them . . ." Romans 12:5, 6

Mission Volunteers are active church members, young and old, with special or general skills who contribute talents in service to others. Churches and projects requesting volunteers provide the orientation and support, though some scholarships are available. The volunteers make a significant contribution as well as grow in their own Christian faith and appreciation of others. Assignments are either in the United States or overseas ■

Mission Diaconate workers are appointed by the Global Mission Ministry Unit for two or three year terms of service overseas. They work in areas of need and concern which are vital to the life of partner churches. Young and older adults, college graduates and professionals are attracted to this service which requires total immersion in a simple lifestyle in a cross-cultural setting ■

Wherever there are opportunities for the sharing of the faith, the sharing of experience, the sharing of gifts, the Presbyterian Church (U.S.A.) historically and presently has a commitment.

EVANGELISM IS VERY MUCH AT THE CORE OF GLOBAL MISSION.



**"We cannot but
speak of what we
have seen and
heard;"
Acts 4:20**

Overseas partner churches are continuously requesting individuals, called by God, to work with them as enablers in evangelism programs reaching people who have not had an opportunity to hear the gospel.

The Presbyterian Church (USA) works with these churches to strengthen their ongoing ministries of church development and theological education.

Presbyterians also have had as a high priority global education, to stimulate leadership development and undergird church growth. Basic education is vital to enable the full understanding of the gospel. More mission workers are assigned to this category of service than any other.

A five year program of evangelism and church growth is now underway with several partner churches on the continent of Africa ■

Only a church fully aware of how people in the world live and feel and think can fulfill its own mission.

MISSION IN CHRIST'S WAY IS COMPASSIONATE

Because Jesus showed compassion for the poor, the sick and the marginalized, there is an urgency in our own lives to do likewise.

One of the ways that Presbyterians do this is through health ministries. We are involved in more than one hundred hospitals and community health programs around the world.

The Presbyterian Church (USA) is actively involved in the campaign of health for all by the year 2,000.

There is also concern, to work in the ministries of compassion which eradicate the root causes of hunger and poverty.

Health workers are greatly needed. ■

To do it all is an expression of the love of Christ and to show forth our compassion in our missionary service.



**"As you did it to
one of the least of
these my brothers
(and sisters), you
did it to me."
Matthew 25:40**